

# MONA OFFSHORE WIND PROJECT

## Environmental Statement

### Volume 7, Annex 6.6: Tree survey and arboricultural impact assessment Part 7 - Appendix C (F02)

Deadline: 7

Application Reference: EN010137

Reference Number: MOCNS-J3303-RPS-10193

Document Reference: F7.6.6 F02

14 January 2025

F02



Image of an offshore wind farm

**Document status**

Version	Purpose of document	Authored by	Reviewed by	Approved by	Review date
F01	Application	RPS	Mona Offshore Wind Ltd	Mona Offshore Wind Ltd	Feb 2024
F02	Submission at Deadline 7	RPS	Mona Offshore Wind Ltd	Mona Offshore Wind Ltd	14 January 2025

Prepared by:

**RPS**

Prepared for:

**Mona Offshore Wind Ltd.**



## Deadline 7 Changes

This document has been updated at Deadline 7 of the Mona Offshore Wind Project examination in order to reflect the change to the Order Limits, forming the Change Request, which was excepted by the Examining Authority on 19 December.

In addition, the updated survey information provided within the Tree Survey Clarification Note (REP3-049 to REP3-057) has been incorporated and minor cartographic errors which had resulted in some information not displaying properly have been corrected (these changes have not impacted the assessment presented in APP-160 and REP3-049).





### LEGEND

Crucial Development Area (NO\_PRL\_BP\_0162\_DCO\_Ru114)

T1 Tree with numbered reference. Canopy spread and coloured BS5837:2012 tree quality category as shown below.  
 # = Tree details estimate (inaccessible tree)  
 \* = Tree in off-site location

G1 Vegetation group with numbered reference. Canopy extents and coloured BS5837:2012 tree quality category as shown below.

H1 Hedgerow with numbered reference. Canopy extents and coloured BS5837:2012 tree quality category as shown below.

W1 Woodland with numbered reference. Canopy extents and coloured BS5837:2012 tree quality category as shown below.

BS 5837:2012 Tree Quality Categories - Table 1

- Category A - High quality
- Category B - Moderate quality
- Category C - Low quality
- Category U - Unsuitable for retention

T1 Tree or vegetation to be removed with numbered reference. Canopy spread and BS5837:2012 tree quality category.

Root protection area (RPA) Calculated in accordance with Section 4.6 - BS5837:2012

Precautionary Root protection area (RPA) previously added to un-surveyed trees. Shown for reference.

Tree protected by Conwy Council or Denbighshire Tree Preservation Order (TPO). Bracketed number reference relates to the TPO Schedule.

Veteran tree buffer (15 x stem Ø) (as per standing advice produced by Natural Resource Wales)

Designated Ancient Woodland and buffer (15m offset, as per Natural Resource Wales woodland inventory, via open data publication)

**Arboricultural BRAG Assessment**  
 Based on quantitative and professional assessment. The ranking is defined as:

- Black: Significant arboreal asset within development;
- Red: High potential to constrain development;
- Amber: Moderate potential to constrain development; and
- Green: Low potential to constrain development

**Construction Compound or Access Area**  
 Arboricultural constraint based on providing a construction exclusion zone (CEZ):

- Black: At all times, compound should avoid entering this area;
- Red: In nearly all circumstances, compound should avoid entering this area;
- Amber: In most circumstances, compound should avoid entering this area;
- Green: Little or no arboricultural constraint which would affect compound location.

**Cable Crossing Technique with numbered reference**

- Trenchless
- Trenching / Trenchless
- Trenched

Indicative temporary protective fencing in accordance with Section 6.2 - BS5837:2012 See example, also shown within supporting report.

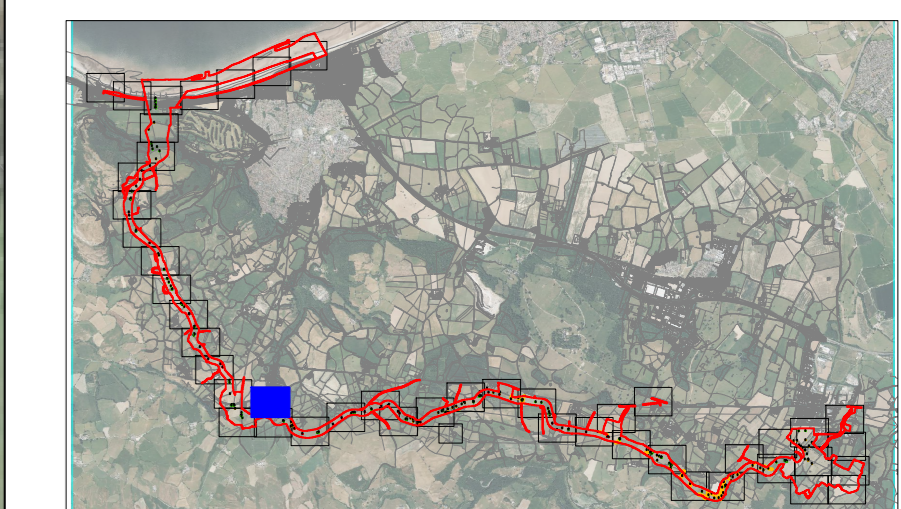
Indicative temporary visual warning barrier. See example detail, also shown within supporting report.

**NOTES:**

- Refer to RPS Tree Survey & Arboricultural Impact Assessment Report for further details.
- Survey based on a visual inspection from the ground and is not intended as a full arboricultural inspection.
- Plan produced in accordance with recommendations set out in BS 5837:2012 - 'Trees in Relation to design, demolition and construction'.
- Due to the legal protection afforded to breeding birds vegetation removal should not take place during the bird nesting period, generally, although not restricted to, March - August inclusive.
- Survey based upon aerial photography, therefore tree locations should be deemed as approximate, and not digitally accurate.
- Pedestrian/vehicular emergency access routes to be maintained at all times.
- All protective fencing to be completed and approved by LPA / CA prior to commencement of any works.
- All works to conform with requirements of BS 5837:2012 - 'Tree Works'.
- BS 5837:2012 - 'Trees in relation to design, demolition and construction'

Rev Description By CB Date

**EnBW** **RPS**  
 Partners in UK offshore wind



**Project Name:**  
 MONA OFFSHORE WIND PROJECT

**Drawing Title:**  
 TREE AND HEDGEROW PROTECTION PLAN

**Scale**  
 Scale@A0: 1:500

**Geodetic Information:**  
 Datum: ETRS 1989  
 Projection: British National Grid

**Data Sources:** Client

**Service Layer Credits:** Esri, HERE, Garmin, Intermap, increment P Corp., GEBCO, USGS, FAO, NPS, NRCAN, GeoBase, IGN, Kadaster NL, Ordnance Survey, Esri Japan, METI, Esri China (Hong Kong), (c) OpenStreetMap contributors, and the GIS User Community

**Drawing Number:**  
 7120

VER	DATE	DETAILS	BY	CHECK
01	Jan/24	Comment	RC	DC
06	Jan/25	Information	RC	DC

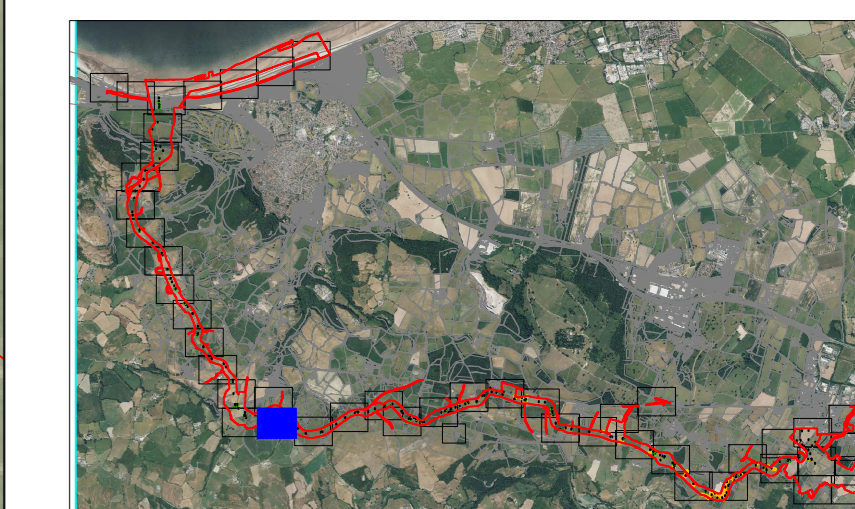




**LEGEND**

- Crustace Development Area (MO\_PRL\_BP\_0162\_DCO\_Ru11a)
- Tree with numbered reference. Canopy spread and coloured BSS837:2012 tree quality category as shown below.
  - # = Tree details estimate (inaccessible tree)
  - \* = Tree in off site location
- Vegetation group with numbered reference. Canopy extents and coloured BSS837:2012 tree quality category as shown below.
- Hedge with numbered reference. Canopy extents and coloured BSS837:2012 tree quality category as shown below.
- Woodland with numbered reference. Canopy extents and coloured BSS837:2012 tree quality category as shown below.
- BSS 837:2012 Tree Quality Categories - Table 1**
  - Category A - High quality
  - Category B - Moderate quality
  - Category C - Low quality
  - Category U - Unsuitable for retention
- Tree or vegetation to be removed with numbered reference. Canopy spread and BSS837:2012 tree quality category.
- Root protection area (RPA) Calculated in accordance with Section 4.6 - BSS837:2012
- Precautionary Root protection area (RPA) previously added to un-surveyed trees. Shown for reference.
- Tree protected by Conwy Council or Denbighshire Tree Preservation Order (TPO). Bracketed number reference relates to the TPO Schedule.
- Veteran tree buffer (15 x stem D) (as per standing advice produced by Natural Resource Wales)
- Designated Ancient Woodland and buffer (15m offset, as per Natural Resource Wales woodland inventory, via open data publication)
- Arboricultural BRAG Assessment**  
Based on quantitative and professional assessment. The ranking is defined as:
  - Black: Significant arboreal asset within development;
  - Red: High potential to constrain development;
  - Amber: Moderate potential to constrain development; and
  - Green: Low potential to constrain development
- Construction Compound or Access Area**  
Arboricultural constraint based on providing a construction exclusion zone (CEZ):
  - Black: At all times, compound should avoid entering this area;
  - Red: In nearly all circumstances, compound should avoid entering this area;
  - Amber: In most circumstances, compound should avoid entering this area;
  - Green: Little or no arboricultural constraint which would affect compound location.
- Cable Crossing Technique with numbered reference**
  - Trenchless
  - Trenching / Trenchless
  - Trenched
- Indicative temporary protective fencing in accordance with Section 8.2 - BSS837:2012 See example, also shown within supporting report.
- Indicative temporary visual warning barrier. See example detail, also shown within supporting report.

- NOTES:**
- Refer to RPS Tree Survey & Arboricultural Impact Assessment Report for further details.
  - Survey based on a visual inspection from the ground and is not intended as a full arboricultural inspection.
  - Plan produced in accordance with recommendations set out in BS 5837:2012 - 'Trees in Relation to design, demolition and construction'.
  - Due to the legal protection afforded to breeding birds vegetation removal should not take place during the bird nesting period, generally, although not restricted to March - August inclusive.
  - Survey based upon aerial photography, therefore tree locations should be deemed as approximate, and not digitally accurate.
  - Professional vehicular emergency access routes to be maintained at all times.
  - All protective fencing to be completed and approved by LPA / CA prior to commencement of any site works.
  - All works to conform with requirements of BS 5837:2012 - 'Tree Works'.
  - BS 5837:2012 - 'Trees in relation to design, demolition and construction'



Rev	Description	By	CB	Date



Drawing Number: 7121

VER	DATE	DETAILS	BY	CHECK
01	Jan/24	Comment	RC	DC
06	Jan/25	Information	RC	DC

**Project Name:**  
MONA OFFSHORE WIND PROJECT

**Drawing Title:**  
TREE AND HEDGEROW PROTECTION PLAN

**Scale**  
Scale@A0: 1:500

**Geodetic Information:**  
Datum: ETRS 1989  
Projection: British National Grid

**Data Sources:** Client

**Service Layer Credits:** Esri, HERE, Garmin, Intermap, increment P Corp., GEBCO, USGS, FAO, NPS, NRCAN, GeoBase, IGN, Kadaster NL, Ordnance Survey, Esri Japan, METI, Esri China (Hong Kong), (c) OpenStreetMap contributors, and the GIS User Community

\\na01-rs-01\projects\3900-Series\JL3999 - Morgan and Mona Offshore\Arboriculture\Tech\ACAD\Current\JL3999\_800F\_TPO\_Cable\_Route.dwg  
\\na01-rs-01\projects\3900-Series\JL3999 - Morgan and Mona Offshore\Arboriculture\Tech\ACAD\Current\JL3999\_800F\_TPO\_Cable\_Route.dwg





### LEGEND

Crustace Development Area (MO\_PRL\_BP\_0102\_DCO\_Rn114)

Tree with numbered reference. Canopy spread and coloured BS5837:2012 tree quality category as shown below.  
 # = Tree details estimate (inaccessible tree)  
 \* = Tree in off site location

Vegetation group with numbered reference. Canopy extents and coloured BS5837:2012 tree quality category as shown below.

Hedge with numbered reference. Canopy extents and coloured BS5837:2012 tree quality category as shown below.

Woodland with numbered reference. Canopy extents and coloured BS5837:2012 tree quality category as shown below.

**BS 5837:2012 Tree Quality Categories - Table 1**

- Category A - High quality
- Category B - Moderate quality
- Category C - Low quality
- Category U - Unsuitable for retention

Tree or vegetation to be removed with numbered reference. Canopy spread and BS5837:2012 tree quality category.

Root protection area (RPA) Calculated in accordance with Section 4.6 - BS5837:2012

Precautionary Root protection area (RPA) previously added to un-surveyed trees. Shown for reference.

Tree protected by Conwy Council or Denbighshire Tree Preservation Order (TPO). Bracketted number reference relates to the TPO Schedule.

Veteran tree buffer (15 x stem D) (as per standing advice produced by Natural Resource Wales)

Designated Ancient Woodland and buffer (15m offset, as per Natural Resource Wales woodland inventory, via open data publication)

**Arboricultural BRAG Assessment**  
 Based on quantitative and professional assessment. The ranking is defined as:

- Black: Significant arboreal asset within development;
- Red: High potential to constrain development;
- Amber: Moderate potential to constrain development; and
- Green: Low potential to constrain development

**Construction Compound or Access Area**  
 Arboricultural constraint based on providing a construction exclusion zone (CEZ):

- Black: At all times, compound should avoid entering this area;
- Red: In nearly all circumstances, compound should avoid entering this area;
- Amber: In most circumstances, compound should avoid entering this area;
- Green: Little or no arboricultural constraint which would affect compound location.

**Cable Crossing Technique with numbered reference**

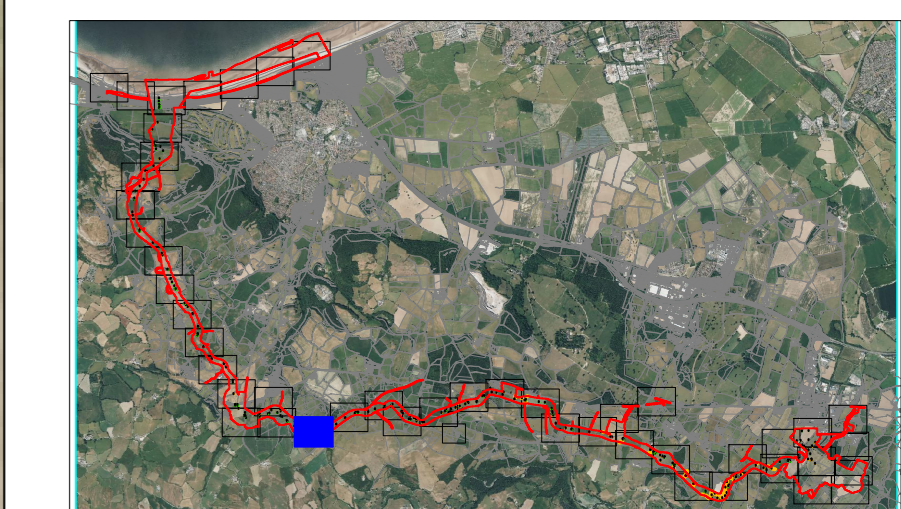
- Trenchless
- Trenching / Trenchless
- Trenched

Indicative temporary protective fencing in accordance with Section 8.2 - BS5837:2012 See example, also shown within supporting report.

Indicative temporary visual warning barrier. See example detail, also shown within supporting report.

**NOTES:**

- Refer to RPS Tree Survey & Arboricultural Impact Assessment Report for further details.
- Survey based on a visual inspection from the ground and is not intended as a full arboricultural inspection.
- Plan produced in accordance with recommendations set out in BS 5837:2012 - 'Trees in Relation to design, demolition and construction'.
- Due to the legal protection afforded to breeding birds vegetation removal should not take place during the bird nesting period, generally, although not restricted to March - August inclusive.
- Survey based upon aerial photography, therefore tree locations should be deemed as approximate, and not digitally accurate.
- Pedestrian/ vehicular emergency access routes to be maintained at all times.
- All protective fencing to be completed and approved by LPA / CA prior to commencement of any works.
- All works to conform with requirements of: BS 5837:2012 - 'Tree Works' BS 5837:2012 - 'Trees in relation to design, demolition and construction'



Rev	Description	By	CB	Date



Drawing Number: 7122

VER	DATE	DETAILS	BY	CHECK
01	Jan/24	Comment	RC	DC
06	Jan/25	Information	RC	DC

© 2023 Microsoft Corporation © 2023 Maxar ©CNES (2023) Distribution Airbus DS

Project Name: MONA OFFSHORE WIND PROJECT

Drawing Title: TREE AND HEDGEROW PROTECTION PLAN

Scale: Scale@A0: 1:500

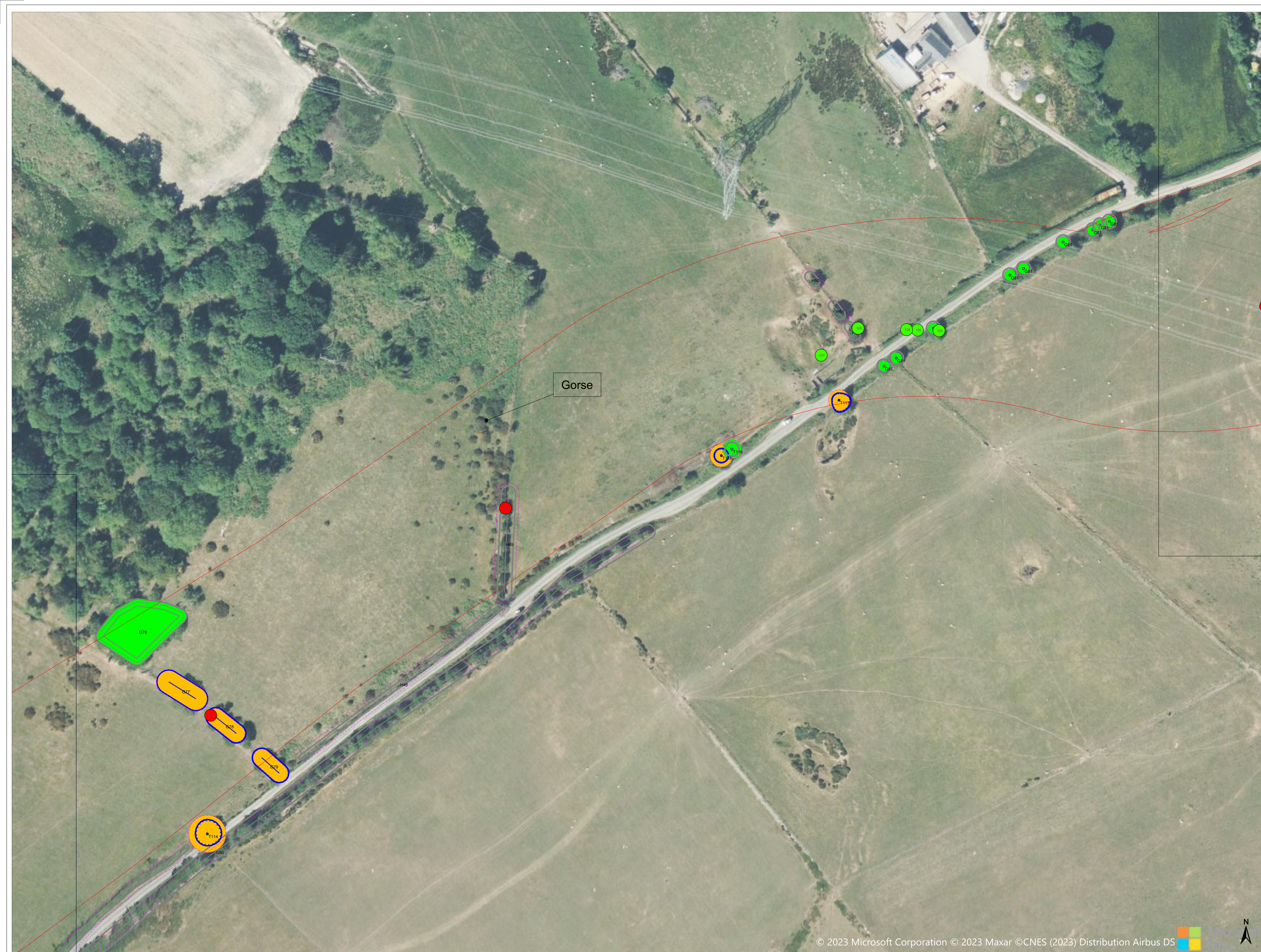
Geodetic Information: Datum: ETRS 1989 Projection: British National Grid

Data Sources: Client

Service Layer Credits: Esri, HERE, Garmin, Intermap, increment P Corp., GEBCO, USGS, FAO, NPS, NRCAN, GeoBase, IGN, Kadaster NL, Ordnance Survey, Esri Japan, METI, Esri China (Hong Kong), (c) OpenStreetMap contributors, and the GIS User Community

\\nas-ifs-01\projects\3900\Series\JL3999 - Morgan and Mona Offshore\Arboriculture\Tech\ACAD\Current\JL3999\_0007\_TFP\_Cable.Route.dwg  
 Visu@-fs-01\projects\3900\Series\JL3999 - Morgan and Mona Offshore\Arboriculture\Tech\ACAD\Current\JL3999\_0007\_TFP\_Cable.Route.dwg





### LEGEND

Crustace Development Area (MO\_PRL\_BP\_01E2\_DCO\_Ru114)

Tree with numbered reference. Canopy spread and coloured BS5837:2012 tree quality category as shown below. # = Tree in off-site location. \* = Tree in off-site location.

Vegetation group with numbered reference. Canopy extents and coloured BS5837:2012 tree quality category as shown below.

Hedge with numbered reference. Canopy extents and coloured BS5837:2012 tree quality category as shown below.

Woodland with numbered reference. Canopy extents and coloured BS5837:2012 tree quality category as shown below.

**BS 5837:2012 Tree Quality Categories - Table 1**

- Category A - High quality
- Category B - Moderate quality
- Category C - Low quality
- Category U - Unsuitable for retention

Tree or vegetation to be removed with numbered reference. Canopy spread and BS5837:2012 tree quality category.

Root protection area (RPA) Calculated in accordance with Section 4.6 - BS5837:2012

Precautionary Root protection area (RPA) previously added to un-surveyed trees. Shown for reference.

Tree protected by Conwy Council or Denbighshire Tree Preservation Order (TPO). Bracketted number reference relates to the TPO Schedule.

Veteran tree buffer (15 x stem ID) (as per standing advice produced by Natural Resource Wales)

Designated Ancient Woodland and buffer (15m offset, as per Natural Resource Wales woodland inventory, via open data publication)

**Arboricultural BRAG Assessment**  
 Based on quantitative and professional assessment. The ranking is defined as:

- Black: Significant arboreal asset within development;
- Red: High potential to constrain development;
- Amber: Moderate potential to constrain development; and
- Green: Low potential to constrain development

**Construction Compound or Access Area**  
 Arboricultural constraint based on providing a construction exclusion zone (CEZ):

- Black: At all times, compound should avoid entering this area;
- Red: In nearly all circumstances, compound should avoid entering this area;
- Amber: In most circumstances, compound should avoid entering this area;
- Green: Little or no arboricultural constraint which would affect compound location.

**Cable Crossing Technique with numbered reference**

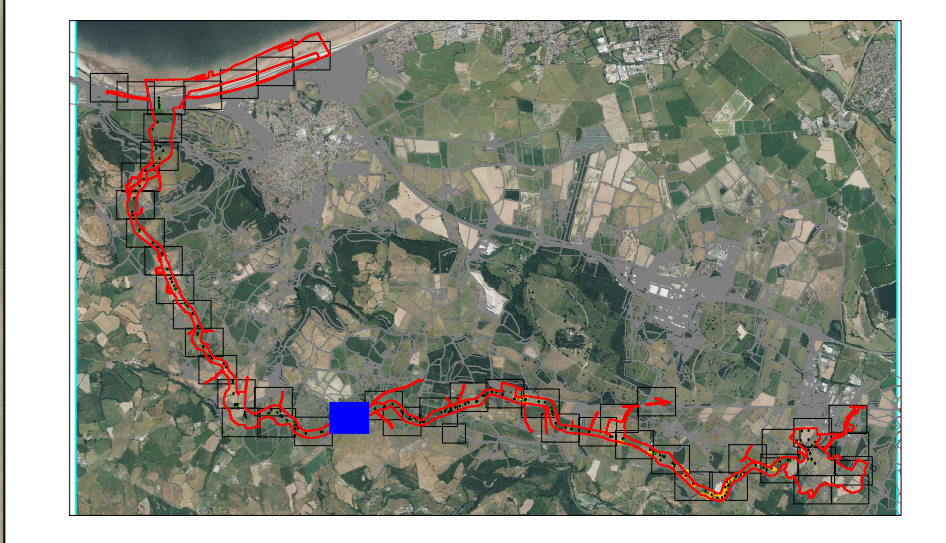
- Trenchless
- Trenching / Trenchless
- Trenched

Indicative temporary protective fencing in accordance with Section 8.2 - BS5837:2012 See example, also shown within supporting report.

Indicative temporary visual warning barrier. See example detail, also shown within supporting report.

**NOTES:**

- Refer to RPS Tree Survey & Arboricultural Impact Assessment Report for further details.
- Survey based on a visual inspection from the ground and is not intended as a full arboricultural inspection.
- Plan produced in accordance with recommendations set out in BS 5837:2012 - 'Trees in Relation to design, demolition and construction'.
- Due to the legal protection afforded to breeding birds vegetation removal should not take place during the bird nesting period, generally, although not restricted to, March - August inclusive.
- Survey based upon aerial photography, therefore tree locations should be deemed as approximate, and not digitally accurate.
- Pedestrian/ vehicular emergency access routes to be maintained at all times.
- All protective fencing to be completed and approved by LPA / CA prior to commencement of any site works.
- All works to conform with requirements of BS 5837:2012 - 'Trees in Relation to design, demolition and construction'.



Rev	Description	By	CB	Date



Drawing Number: 7123

Project Name: MONA OFFSHORE WIND PROJECT

Drawing Title: TREE AND HEDGEROW PROTECTION PLAN

Scale: Scale@A0: 1:500

Geodetic Information: Datum: ETRS 1989 Projection: British National Grid

Data Sources: Client

Service Layer Credits: Esri, HERE, Garmin, Intermap, increment P Corp., GEBCO, USGS, FAO, NPS, NRCAN, GeoBase, IGN, Kadaster NL, Ordnance Survey, Esri Japan, METI, Esri China (Hong Kong), (c) OpenStreetMap contributors, and the GIS User Community

VER	DATE	DETAILS	BY	CHECK
01	Jan/24	Comment	RC	DC
06	Jan/25	Information	RC	DC

\\s01-15-01\projects\3900\Series\JL3999 - Morgan and Mona Offshore\Arboriculture\Tech\ACAD\Current\JL3999\_800P\_TFP\_CableRoute.dwg





### LEGEND

Outline Development Area (MO\_PRL\_BP\_0162\_DCO\_Ren114)

Tree with numbered reference. Canopy spread and coloured BS5837:2012 tree quality category as shown below.  
 = Tree details estimate (inaccessible tree)  
 = Tree in off site location

Vegetation group with numbered reference. Canopy extents and coloured BS5837:2012 tree quality category as shown below.

Hedge with numbered reference. Canopy extents and coloured BS5837:2012 tree quality category as shown below.

Woodland with numbered reference. Canopy extents and coloured BS5837:2012 tree quality category as shown below.

**BS 5837:2012 Tree Quality Categories - Table 1**

- Category A - High quality
- Category B - Moderate quality
- Category C - Low quality
- Category U - Unsuitable for retention

Tree or vegetation to be removed with numbered reference. Canopy spread and BS5837:2012 tree quality category.

Root protection area (RPA) Calculated in accordance with Section 4.6 - BS5837:2012

Precautionary Root protection area (RPA) previously added to un-surveyed trees. Shown for reference.

Tree protected by Conwy Council or Denbighshire Tree Preservation Order (TPO). Bracketed number reference relates to the TPO Schedule.

Veteran tree buffer (15 x stem ID) (as per standing advice produced by Natural Resource Wales)

Designated Ancient Woodland and buffer (15m offset, as per Natural Resource Wales woodland inventory, via open data publication)

**Arboricultural BRAG Assessment**  
 Based on quantitative and professional assessment. The ranking is defined as:

- Black: Significant arboreal asset within development;
- Red: High potential to constrain development;
- Amber: Moderate potential to constrain development; and
- Green: Low potential to constrain development

**Construction Compound or Access Area**  
 Arboricultural constraint based on providing a construction exclusion zone (CEZ):

- Black: At all times, compound should avoid entering this area;
- Red: In nearly all circumstances, compound should avoid entering this area;
- Amber: In most circumstances, compound should avoid entering this area;
- Green: Little or no arboricultural constraint which would affect compound location.

**Cable Crossing Technique with numbered reference**

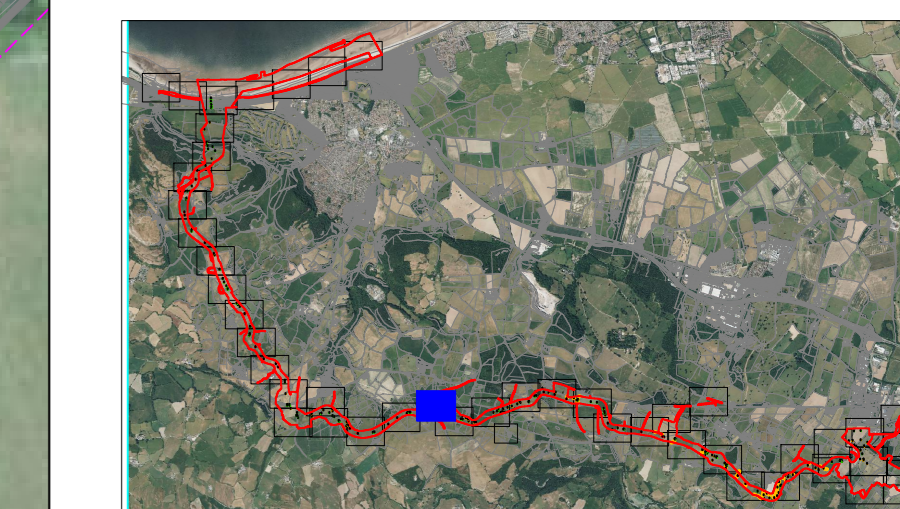
- Trenchless
- Trenching / Trenchless
- Trenched

Indicative temporary protective fencing in accordance with Section 8.2 - BS5837:2012 See example, also shown within supporting report.

Indicative temporary visual warning barrier. See example detail, also shown within supporting report.

**NOTES:**

- Refer to RPS Tree Survey & Arboricultural Impact Assessment Report for further details.
- Survey based on a visual inspection from the ground and is not intended as a full arboricultural inspection.
- Plan produced in accordance with recommendations set out in BS 5837:2012 - 'Trees in Relation to design, demolition and construction'.
- Due to the legal protection afforded to breeding birds vegetation removal should not take place during the bird nesting period, generally, although not restricted to March - August inclusive.
- Survey based upon aerial photography, therefore tree locations should be deemed as approximate, and not digitally accurate.
- Pedestrian/vehicular emergency access routes to be maintained at all times.
- All protective fencing to be completed and approved by LPA / CA prior to commencement of any site works.
- All works to conform with requirements of BS 5837:2012 - Tree Works
- BS 5837:2012 - Trees in relation to design, demolition and construction



Rev	Description	By	CR	Date



Drawing Number: 7124

**Project Name:**  
MONA OFFSHORE WIND PROJECT

**Drawing Title:**  
TREE AND HEDGEROW PROTECTION PLAN

**Scale**  
Scale@A0: 1:500

**Geodetic Information:**  
Datum: ETRS 1989  
Projection: British National Grid

**Data Sources:** Client

**Service Layer Credits:** Esri, HERE, Garmin, Intermap, increment P Corp., GEBCO, USGS, FAO, NPS, NRCAN, GeoBase, IGN, Kadaster NL, Ordnance Survey, Esri Japan, METI, Esri China (Hong Kong), (c) OpenStreetMap contributors, and the GIS User Community

VER	DATE	DETAILS	BY	CHECK
01	Jan/24	Comment	RC	DC
06	Jan/25	Information	RC	DC

\\na-hs-01\projects\3900\Series\JL3999 - Morgan and Mona Offshore\Arboriculture\Tech\ACAD\Current\JL3999\_800P\_TFP\_Cable\_Route.dwg  
 \na-hs-01\projects\3900\Series\JL3999 - Morgan and Mona Offshore\Arboriculture\Tech\ACAD\Current\JL3999\_800P\_TFP\_Cable\_Route.dwg



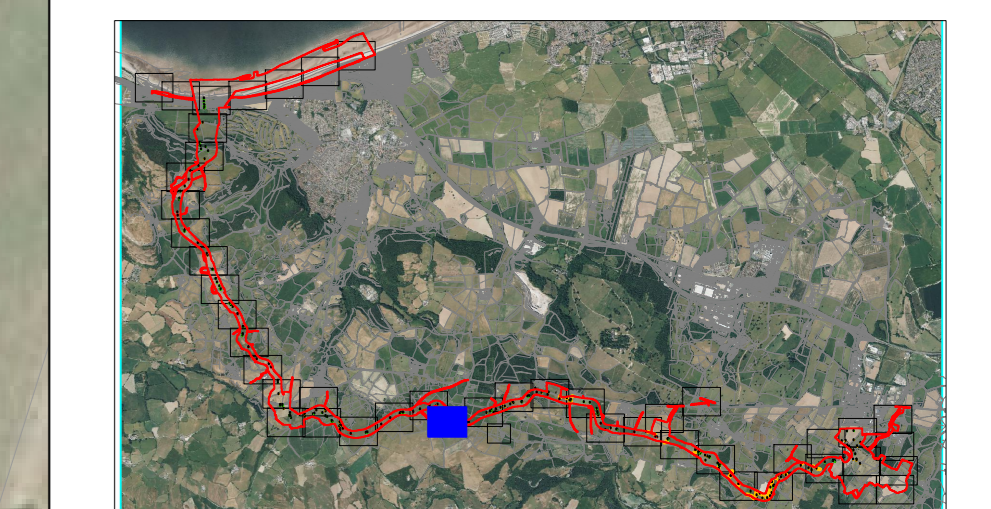


### LEGEND

Crustace Development Area (MO\_PRL\_BP\_0162\_DCO\_Ru114)
   
 Tree with numbered reference. Canopy spread and coloured BS5837:2012 tree quality category as shown below.
   
 = Tree in details estimate (inaccessible tree)
   
 = Tree in site location
   
 Vegetation group with numbered reference. Canopy extents and coloured BS5837:2012 tree quality category as shown below.
   
 Hedge with numbered reference. Canopy extents and coloured BS5837:2012 tree quality category as shown below.
   
 Woodland with numbered reference. Canopy extents and coloured BS5837:2012 tree quality category as shown below.
   
**BS 5837:2012 Tree Quality Categories - Table 1**
  
 Category A - High quality
   
 Category B - Moderate quality
   
 Category C - Low quality
   
 Category U - Unsuitable for retention
   
 Tree or vegetation to be removed with numbered reference. Canopy spread and BS5837:2012 tree quality category.
   
 Root protection area (RPA) Calculated in accordance with Section 4.6 - BS5837:2012
   
 Precautionary Root protection area (RPA) previously added to un-surveyed trees. Shown for reference.
   
 Tree protected by Conwy Council or Denbighshire Tree Preservation Order (TPO). Bracketted number reference relates to the TPO Schedule.
   
 Veteran tree buffer (15 x stem Ø) (as per standing advice produced by Natural Resource Wales)
   
 Designated Ancient Woodland and buffer (15m offset, as per Natural Resource Wales woodland inventory, via open data publication)
   
**Arboricultural BRAG Assessment**
  
 Based on quantitative and professional assessment. The ranking is defined as:
   
 Black: Significant arboreal asset within development;
   
 Red: High potential to constrain development;
   
 Amber: Moderate potential to constrain development; and
   
 Green: Low potential to constrain development
   
**Construction Compound or Access Area**
  
 Arboricultural constraint based on providing a construction exclusion zone (CEZ):
   
 Black: At all times, compound should avoid entering this area;
   
 Red: In nearly all circumstances, compound should avoid entering this area;
   
 Amber: In most circumstances, compound should avoid entering this area;
   
 Green: Little or no arboricultural constraint which would affect compound location.
   
**Cable Crossing Technique with numbered reference**
  
 Trenchless
   
 Trenching / Trenchless
   
 Trenched
   
 Indicative temporary protective fencing in accordance with Section 8.2 - BS5837:2012 See example, also shown within supporting report.
   
 Indicative temporary visual warning barrier. See example detail, also shown within supporting report.

**NOTES:**

- Refer to RPS Tree Survey & Arboricultural Impact Assessment Report for further details.
- Survey based on a visual inspection from the ground and is not intended as a full arboricultural inspection.
- Plan produced in accordance with recommendations set out in BS 5837:2012 - 'Trees in Relation to design, demolition and construction'.
- Due to the legal protection afforded to breeding birds vegetation removal should not take place during the bird nesting period, generally, although not restricted to, March - August inclusive.
- Survey based upon aerial photography, therefore tree locations should be deemed as approximate, and not digitally accurate.
- Pedestrian/vehicular emergency access routes to be maintained at all times.
- All protective fencing to be completed and approved by LPA / CA prior to commencement of any site works.
- All works to conform with requirements of BS 5837:2012 - 'Tree Works'.
- BS 5837:2012 - 'Trees in relation to design, demolition and construction'.



Rev	Description	By	CB	Date



Drawing Number: 7125

Project Name: MONA OFFSHORE WIND PROJECT

Tree and Hedgerow Protection Plan

Scale: Scale@A0: 1:500

Geodetic Information: Datum: ETRS 1989 Projection: British National Grid

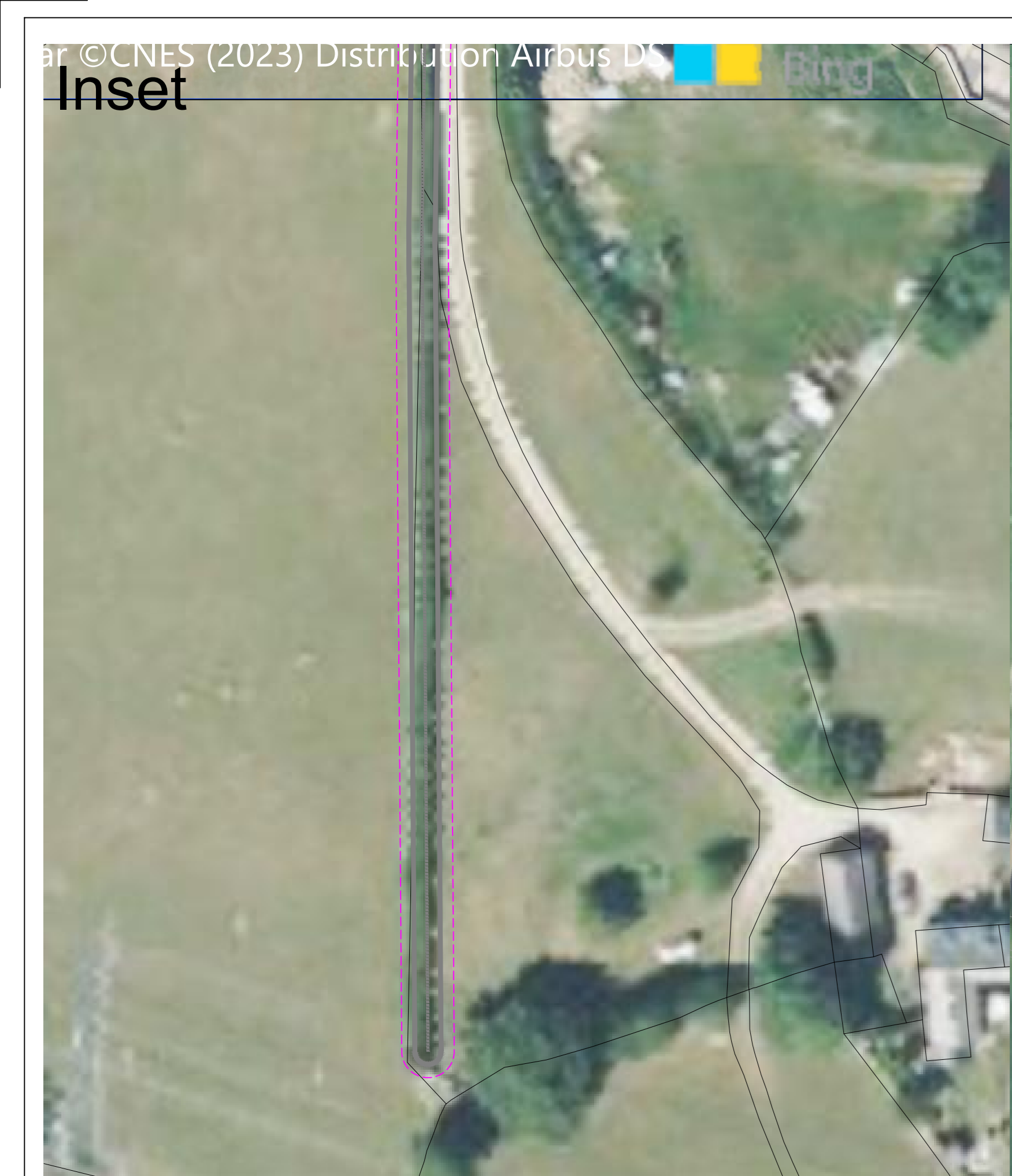
Data Sources: Client

Service Layer Credits: Esri, HERE, Garmin, Intermap, increment P Corp., GEBCO, USGS, FAO, NPS, NRCAN, GeoBase, IGN, Kadaster NL, Ordnance Survey, Esri Japan, METI, Esri China (Hong Kong), (c) OpenStreetMap contributors, and the GIS User Community

VER	DATE	DETAILS	BY	CHECK
01	Jan/24	Comment	RC	DC
06	Jan/25	Information	RC	DC

\\na01\projects\3000\Series\JL3999 - Morgan and Mona Offshore\Arboriculture\Tech\ACAD\Current\JL3999\_800F\_TFP\_Cable\_Route.dwg





### LEGEND

**BS 5837:2012 Tree Quality Categories - Table 1**

- Category A - High quality
- Category B - Moderate quality
- Category C - Low quality
- Category U - Unsuitable for retention

**Tree with numbered reference:**  
 Canopy spread and coloured BS5837:2012 tree quality category as shown below.  
 # = Tree details estimate (inaccessible tree)  
 \* = Tree in off site location

**Vegetation group with numbered reference:**  
 Canopy extents and coloured BS5837:2012 tree quality category as shown below.

**Hedge with numbered reference:**  
 Canopy extents and coloured BS5837:2012 tree quality category as shown below.

**Woodland with numbered reference:**  
 Canopy extents and coloured BS5837:2012 tree quality category as shown below.

**Tree or vegetation to be removed with numbered reference. Canopy spread and BS5837:2012 tree quality category.**

**Root protection area (RPA)**  
 Calculated in accordance with Section 4.6 - BS5837:2012

**Precautionary Root protection area (RPA)**  
 previously added to un-surveyed trees. Shown for reference.

**Tree protected by Conwy Council or Denbighshire Tree Preservation Order (TPO). Bracketed number reference relates to the TPO Schedule.**

**Veteran tree buffer (15 x stem ID)**  
 (as per standing advice produced by Natural Resource Wales)

**Designated Ancient Woodland and buffer (15m offset, as per Natural Resource Wales woodland inventory, via open data publication)**

**Arboricultural BRAG Assessment**  
 Based on quantitative and professional assessment. The ranking is defined as:

- Black: Significant arboreal asset within development;
- Red: High potential to constrain development;
- Amber: Moderate potential to constrain development; and
- Green: Low potential to constrain development

**Construction Compound or Access Area**  
 Arboricultural constraint based on providing a construction exclusion zone (CEZ):

- Black: At all times, compound should avoid entering this area;
- Red: In nearly all circumstances, compound should avoid entering this area;
- Amber: In most circumstances, compound should avoid entering this area;
- Green: Little or no arboricultural constraint which would affect compound location.

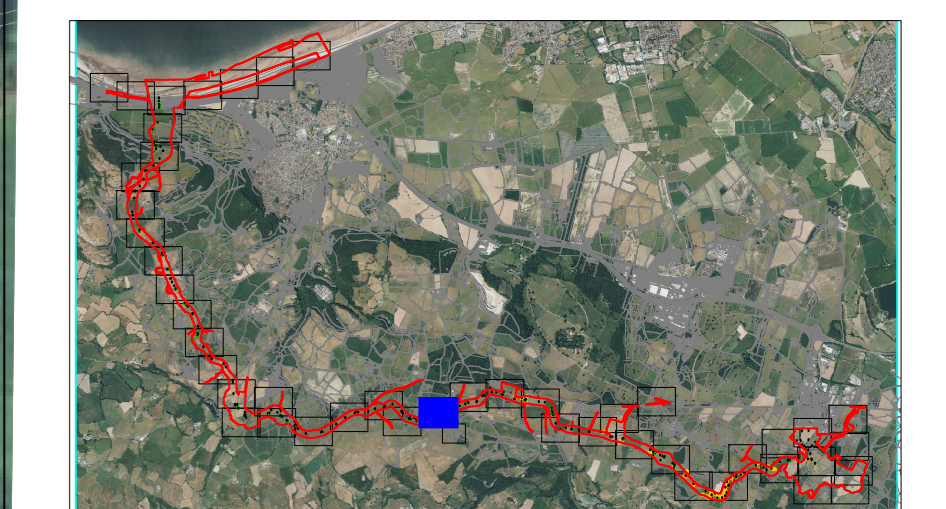
**Cable Crossing Technique with numbered reference**

- Trenchless
- Trenching / Trenchless
- Trenched

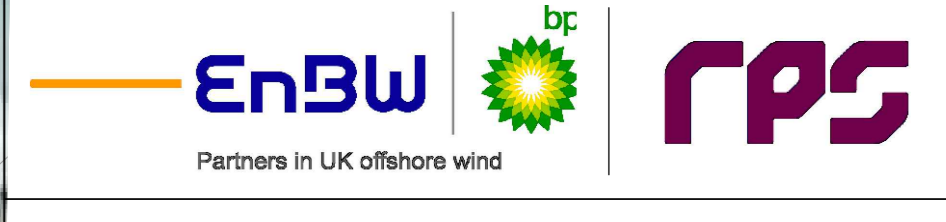
**Indicative temporary protective fencing in accordance with Section 8.2 - BS5837:2012**  
 See example, also shown within supporting report.

**Indicative temporary visual warning barrier.**  
 See example detail, also shown within supporting report.

- NOTES:**
- Refer to RPS Tree Survey & Arboricultural Impact Assessment Report for further details.
  - Survey based on a visual inspection from the ground and is not intended as a full arboricultural inspection.
  - Plan produced in accordance with recommendations set out in BS 5837:2012 - 'Trees in Relation to design, demolition and construction'.
  - Due to the legal protection afforded to breeding birds vegetation removal should not take place during the bird nesting period, generally, although not restricted to March - August inclusive.
  - Survey based upon aerial photography, therefore tree locations should be deemed as approximate, and not digitally accurate.
  - Provisional vehicular emergency access routes to be maintained at all times.
  - All protective fencing to be completed and approved by LPA / CA prior to commencement of any site works.
  - All works to conform with requirements of BS 5837:2012 - Tree Works.
  - BS 5837:2012 - Trees in relation to design, demolition and construction



Rev	Description	By	CB	Date



Drawing Number: 7126

Project Name: MONA OFFSHORE WIND PROJECT

Drawing Title: TREE AND HEDGEROW PROTECTION PLAN

Scale: Scale@A0: 1:500

Geodetic Information: Datum: ETRS 1989, Projection: British National Grid

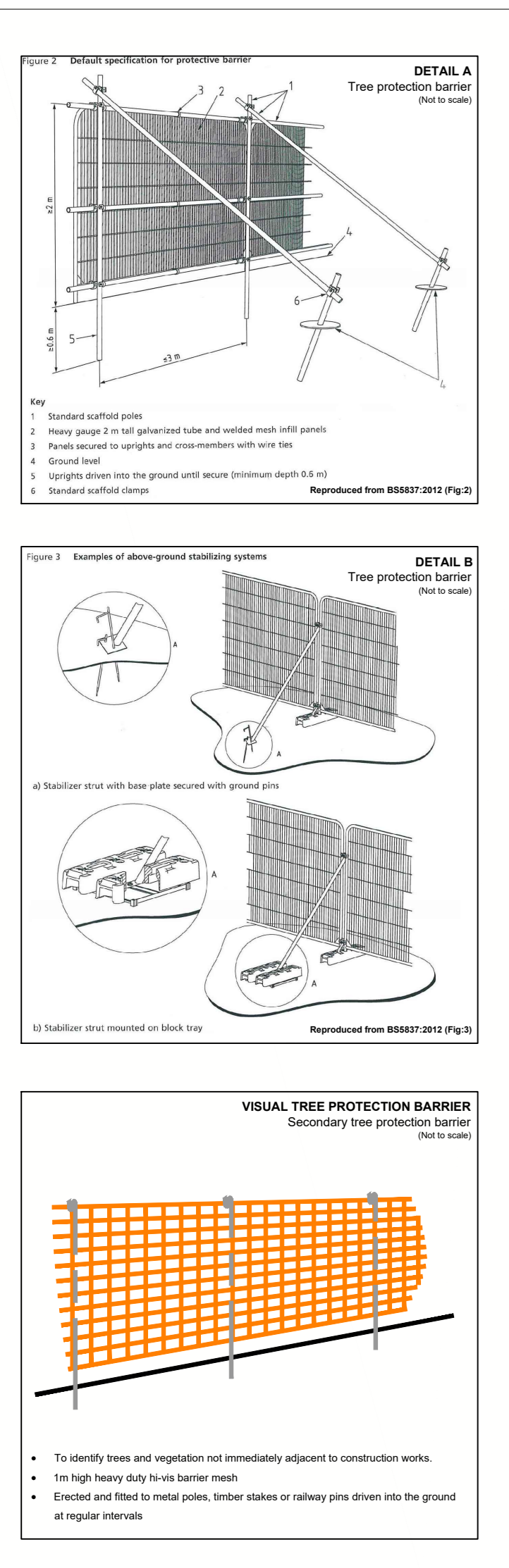
Data Sources: Client

Service Layer Credits: Esri, HERE, Garmin, Intermap, increment P Corp., GEBCO, USGS, FAO, NPS, NRCAN, GeoBase, IGN, Kadaster NL, Ordnance Survey, Esri Japan, METI, Esri China (Hong Kong), (c) OpenStreetMap contributors, and the GIS User Community

VER	DATE	DETAILS	BY	CHECK
01	Jan/24	Comment	RC	DC
06	Jan/25	Information	RC	DC

\\nas01\c01\projects\3900\Series\JL3999 - Morgan and Mona Offshore\Arboriculture\Tech\ACAD\Current\JL3999\_800P\_TFP\_Cable Route.dwg  
 Visu04-15-21\project\3900\Series\JL3999 - Morgan and Mona Offshore\Arboriculture\Tech\ACAD\Current\JL3999\_800P\_TFP\_Cable Route.dwg





**LEGEND**

- Orange Development Area (MO\_PRL\_BP\_0162\_DCO\_Ru114)
- Tree with numbered reference. Canopy spread and coloured BS5837:2012 tree quality category as shown below.
  - # = Tree details estimate (inaccessible tree)
  - = Tree in site location
- Vegetation group with numbered reference. Canopy extents and coloured BS5837:2012 tree quality category as shown below.
- Hedge with numbered reference. Canopy extents and coloured BS5837:2012 tree quality category as shown below.
- Woodland with numbered reference. Canopy extents and coloured BS5837:2012 tree quality category as shown below.

**BS 5837:2012 Tree Quality Categories - Table 1**

- Category A - High quality
- Category B - Moderate quality
- Category C - Low quality
- Category U - Unsuitable for retention

- Tree or vegetation to be removed with numbered reference. Canopy spread and BS5837:2012 tree quality category.
- Root protection area (RPA) Calculated in accordance with Section 4.6 - BS5837:2012
- Precautionary Root protection area (RPA) previously added to un-surveyed trees. Shown for reference.
- Tree protected by Conwy Council or Denbighshire Tree Preservation Order (TPO). Bracketed number reference relates to the TPO Schedule.
- Veteran tree buffer (15 x stem ID) (as per standing advice produced by Natural Resource Wales)
- Designated Ancient Woodland and buffer (15m offset, as per Natural Resource Wales woodland inventory, via open data publication)

**Arboricultural BRAG Assessment**  
Based on quantitative and professional assessment. The ranking is defined as:

- Black: Significant arboreal asset within development;
- Red: High potential to constrain development;
- Amber: Moderate potential to constrain development;
- Green: Low potential to constrain development

**Construction Compound or Access Area**  
Arboricultural constraint based on providing a construction exclusion zone (CEZ):

- Black: At all times, compound should avoid entering this area;
- Red: In nearly all circumstances, compound should avoid entering this area;
- Amber: In most circumstances, compound should avoid entering this area;
- Green: Little or no arboricultural constraint which would affect compound location.

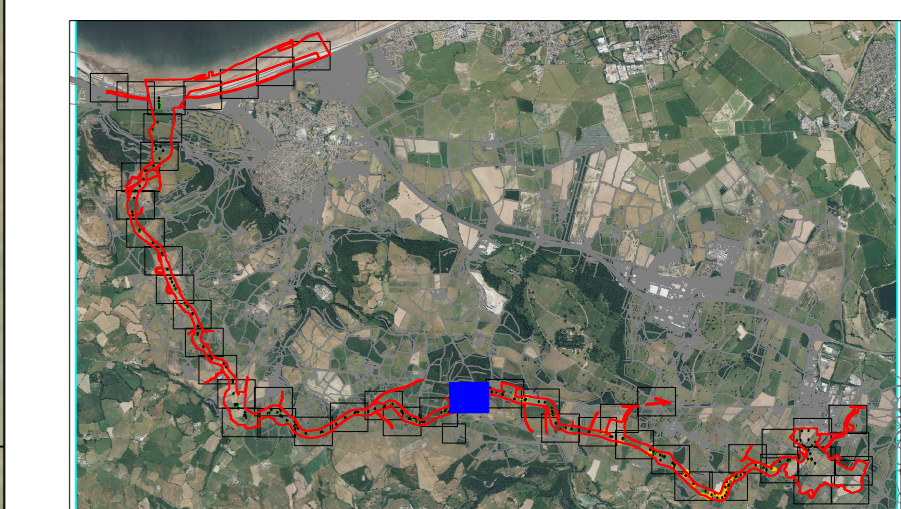
**Cable Crossing Technique with numbered reference**

- Trenchless
- Trenching / Trenchless
- Trenched

- Indicative temporary protective fencing in accordance with Section 8.2 - BS5837:2012 See example, also shown within supporting report.
- Indicative temporary visual warning barrier. See example detail, also shown within supporting report.

**NOTES:**

- Refer to RPS Tree Survey & Arboricultural Impact Assessment Report for further details.
- Survey based on a visual inspection from the ground and is not intended as a full arboricultural inspection.
- Plan produced in accordance with recommendations set out in BS 5837:2012 - 'Trees in Relation to design, demolition and construction'.
- Due to the legal protection afforded to breeding birds vegetation removal should not take place during the bird nesting period, generally, although not restricted to March - August inclusive.
- Survey based upon aerial photography, therefore tree locations should be deemed as approximate, and not digitally accurate.
- Pedestrian/vehicular emergency access routes to be maintained at all times.
- All protective fencing to be completed and approved by LPA / CA prior to commencement of any site works.
- All works to conform with requirements of BS 5837:2012 - 'Tree Works'.
- BS 5837:2012 - 'Trees in relation to design, demolition and construction'



Rev	Description	By	CB	Date



Drawing Number: 7127

Project Name: MONA OFFSHORE WIND PROJECT

Drawing Title: TREE AND HEDGEROW PROTECTION PLAN

Scale: Scale@A0: 1:500

Geodetic Information: Datum: ETRS 1989 Projection: British National Grid

Data Sources: Client

Service Layer Credits: Esri, HERE, Garmin, Intermap, increment P Corp., GEBCO, USGS, FAO, NPS, NRCAN, GeoBase, IGN, Kadaster NL, Ordnance Survey, Esri Japan, METI, Esri China (Hong Kong), (c) OpenStreetMap contributors, and the GIS User Community

VER	DATE	DETAILS	BY	CHECK
01	Jan/24	Comment	RC	DC
06	Jan/25	Information	RC	DC

\\s01-rs-01\projects\3900\Series\JL3999 - Morgan and Mona Offshore\Arboriculture\Tech\ACAD\Current\JL3999\_800P\_TFP\_Cable\_Route.dwg





### LEGEND

Crucial Development Area (NO\_PRL\_BP\_012\_DCO\_Ru114)

T1 Tree with numbered reference. Canopy spread and coloured BS5837:2012 tree quality category as shown below.  
 # = Tree details estimate (inaccessible tree)  
 \* = Tree in off site location

G1 Vegetation group with numbered reference. Canopy extents and coloured BS5837:2012 tree quality category as shown below.

H1 Hedge with numbered reference. Canopy extents and coloured BS5837:2012 tree quality category as shown below.

W1 Woodland with numbered reference. Canopy extents and coloured BS5837:2012 tree quality category as shown below.

BS 5837:2012 Tree Quality Categories - Table 1

- Category A - High quality
- Category B - Moderate quality
- Category C - Low quality
- Category U - Unsuitable for retention

T1 Tree or vegetation to be removed with numbered reference. Canopy spread and BS5837:2012 tree quality category.

Root protection area (RPA) Calculated in accordance with Section 4.6 - BS5837:2012

Precautionary Root protection area (RPA) previously added to un-surveyed trees. Shown for reference.

Tree protected by Conwy Council or Denbighshire Tree Preservation Order (TPO). Bracketed number reference relates to the TPO Schedule.

Veteran tree buffer (15 x stem Ø) (as per standing advice produced by Natural Resource Wales)

Designated Ancient Woodland and buffer (15m offset, as per Natural Resource Wales woodland inventory, via open data publication)

Arboricultural BRAG Assessment  
 Based on quantitative and professional assessment. The ranking is defined as:

- Black: Significant arboreal asset within development;
- Red: High potential to constrain development;
- Amber: Moderate potential to constrain development; and
- Green: Low potential to constrain development

Construction Compound or Access Area  
 Arboricultural constraint based on providing a construction exclusion zone (CEZ):

- Black: At all times, compound should avoid entering this area;
- Red: In nearly all circumstances, compound should avoid entering this area;
- Amber: In most circumstances, compound should avoid entering this area;
- Green: Little or no arboricultural constraint which would affect compound location.

Cable Crossing Technique with numbered reference

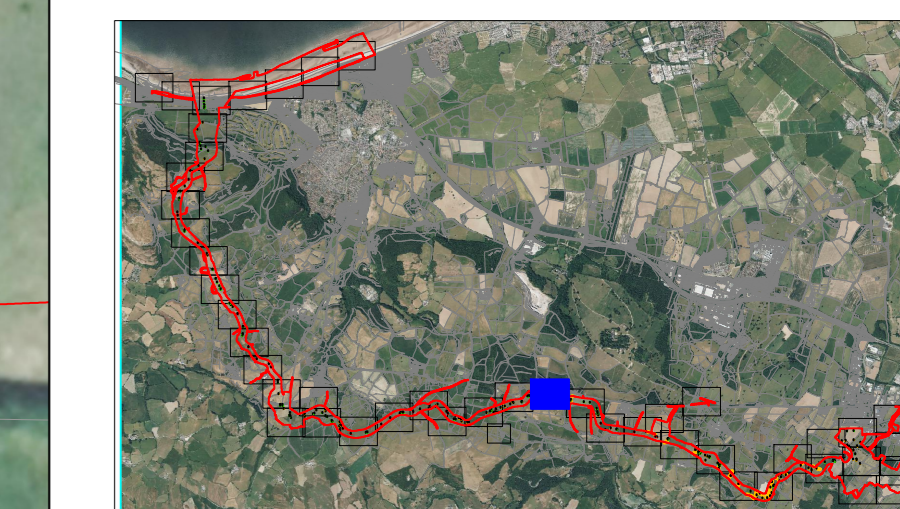
- Trenchless
- Trenching / Trenchless
- Trenched

Indicative temporary protective fencing in accordance with Section 6.2 - BS5837:2012 See example, also shown within supporting report.

Indicative temporary visual warning barrier. See example detail, also shown within supporting report.

**NOTES:**

- Refer to RPS Tree Survey & Arboricultural Impact Assessment Report for further details.
- Survey based on a visual inspection from the ground and is not intended as a full arboricultural inspection.
- Plan produced in accordance with recommendations set out in BS 5837:2012 - 'Trees in Relation to design, demolition and construction'.
- Due to the legal protection afforded to breeding birds vegetation removal should not take place during the bird nesting period, generally, although not restricted to, March - August inclusive.
- Survey based upon aerial photography, therefore tree locations should be deemed as approximate, and not digitally accurate.
- Pedestrian/vehicular emergency access routes to be maintained at all times.
- All protective fencing to be completed and approved by LPA / CA prior to commencement of any site works.
- All works to conform with requirements of BS 5837:2012 - Tree Works
- BS 5837:2012 - Trees in relation to design, demolition and construction



Rev	Description	By	CB	Date



Drawing Number: 7128

VER	DATE	DETAILS	BY	CHECK
01	Jan/24	Comment	RC	DC
06	Jan/25	Information	RC	DC

© 2023 Microsoft Corporation © 2023 Maxar ©CNES (2023) Distribution Airbus DS

**Project Name:**  
MONA OFFSHORE WIND PROJECT

**Drawing Title:**  
TREE AND HEDGEROW PROTECTION PLAN

**Scale**  
Scale@A0: 1:500

**Geodetic Information:**  
Datum: ETRS 1989  
Projection: British National Grid

**Data Sources:** Client

**Service Layer Credits:** Esri, HERE, Garmin, Intermap, increment P Corp., GEBCO, USGS, FAO, NPS, NRCAN, GeoBase, IGN, Kadaster NL, Ordnance Survey, Esri Japan, METI, Esri China (Hong Kong), (c) OpenStreetMap contributors, and the GIS User Community

\\s01-46-01\projects\3900\Series\JL3999 - Morgan and Mona Offshore\Arboriculture\TechCAD\Current\JL3999\_800P\_TFP\_Cable Route.dwg  
 \\s01-46-01\projects\3900\Series\JL3999 - Morgan and Mona Offshore\Arboriculture\TechCAD\Current\JL3999\_800P\_TFP\_Cable Route.dwg





### LEGEND

Cruciform Development Area (MO\_PRL\_BP\_0102\_DCO\_Ren114)

T1 Tree with numbered reference. Canopy spread and coloured BS5837:2012 tree quality category as shown below.  
 # = Tree details estimate (inaccessible tree)  
 \* = Tree in off site location

G1 Vegetation group with numbered reference. Canopy extents and coloured BS5837:2012 tree quality category as shown below.

H1 Hedge with numbered reference. Canopy extents and coloured BS5837:2012 tree quality category as shown below.

W1 Woodland with numbered reference. Canopy extents and coloured BS5837:2012 tree quality category as shown below.

BS 5837:2012 Tree Quality Categories - Table 1

- Category A - High quality
- Category B - Moderate quality
- Category C - Low quality
- Category U - Unsuitable for retention

T1 Tree or vegetation to be removed with numbered reference. Canopy spread and BS5837:2012 tree quality category.

Root protection area (RPA) Calculated in accordance with Section 4.6 - BS5837:2012

Precautionary Root protection area (RPA) previously added to un-surveyed trees. Shown for reference.

Tree protected by Conwy Council or Denbighshire Tree Preservation Order (TPO). Bracketed number reference relates to the TPO Schedule.

Veteran tree buffer (15 x stem Ø) (as per standing advice produced by Natural Resource Wales)

Designated Ancient Woodland and buffer (15m offset, as per Natural Resource Wales woodland inventory, via open data publication)

**Arboricultural BRAG Assessment**  
 Based on quantitative and professional assessment. The ranking is defined as:

- Black: Significant arboreal asset within development;
- Red: High potential to constrain development;
- Amber: Moderate potential to constrain development; and
- Green: Low potential to constrain development

**Construction Compound or Access Area**  
 Arboricultural constraint based on providing a construction exclusion zone (CEZ):

- Black: At all times, compound should avoid entering this area;
- Red: In nearly all circumstances, compound should avoid entering this area;
- Amber: In most circumstances, compound should avoid entering this area;
- Green: Little or no arboricultural constraint which would affect compound location.

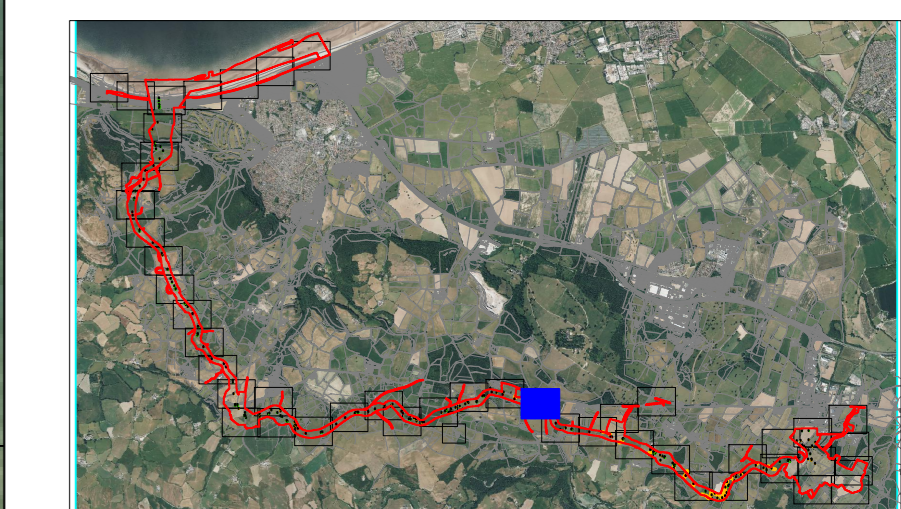
**Cable Crossing Technique with numbered reference**

- Trenchless
- Trenching / Trenchless
- Trenched

Indicative temporary protective fencing in accordance with Section 6.2 - BS5837:2012 See example, also shown within supporting report.

Indicative temporary visual warning barrier. See example detail, also shown within supporting report.

- NOTES:**
- Refer to RPS Tree Survey & Arboricultural Impact Assessment Report for further details.
  - Survey based on a visual inspection from the ground and is not intended as a full arboricultural inspection.
  - Plan produced in accordance with recommendations set out in BS 5837:2012 - 'Trees in Relation to design, demolition and construction'.
  - Due to the legal protection afforded to breeding birds vegetation removal should not take place during the bird nesting period, generally, although not restricted to March - August inclusive.
  - Survey based upon aerial photography, therefore tree locations should be deemed as approximate, and not digitally accurate.
  - Pedestrian/vehicular emergency access routes to be maintained at all times.
  - All protective fencing to be completed and approved by LPA / CA prior to commencement of any site works.
  - All works to conform with requirements of BS 5837:2012 - Tree Works
  - BS 5837:2012 - Trees in relation to design, demolition and construction



Rev	Description	By	CB	Date



Drawing Number:  
**7129**

**Project Name:**  
MONA OFFSHORE WIND PROJECT

**Drawing Title:**  
TREE AND HEDGEROW PROTECTION PLAN

**Scale**  
Scale@A0: 1:500

**Geodetic Information:**  
Datum: ETRS 1989  
Projection: British National Grid

**Data Sources:** Client

**Service Layer Credits:** Esri, HERE, Garmin, Intermap, increment P Corp., GEBCO, USGS, FAO, NPS, NRCAN, GeoBase, IGN, Kadaster NL, Ordnance Survey, Esri Japan, METI, Esri China (Hong Kong), (c) OpenStreetMap contributors, and the GIS User Community

VER	DATE	DETAILS	BY	CHECK
01	Jan/24	Comment	RC	DC
06	Jan/25	Information	RC	DC

\\s01-15-01\projects\3300\Series\JL3999 - Morgan and Mona Offshore\Arboriculture\Tech\ACAD\Current\JL3999\_800P\_TFP\_Cable\_Route.dwg  
 \\s01-15-01\projects\3300\Series\JL3999 - Morgan and Mona Offshore\Arboriculture\Tech\ACAD\Current\JL3999\_800P\_TFP\_Cable\_Route.dwg





### LEGEND

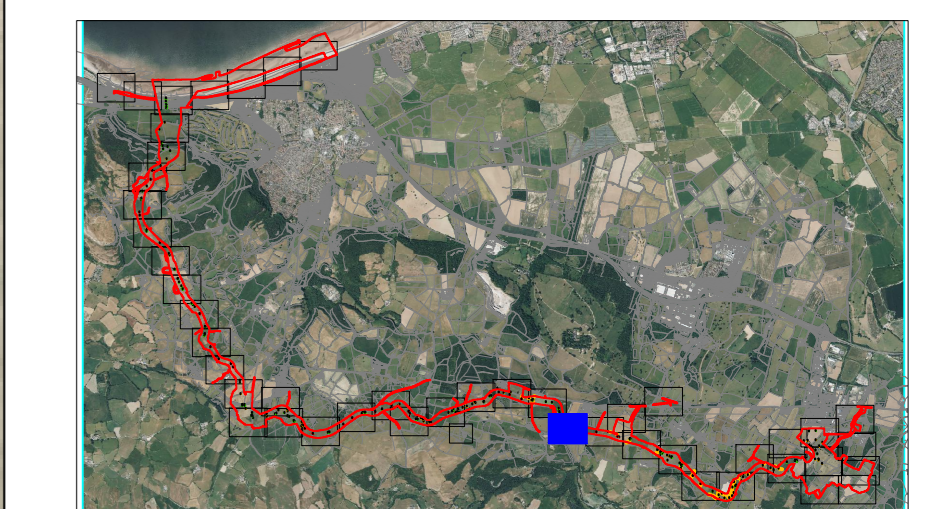
Crustace Development Area (NO\_PRL\_BP\_01E2\_DCO\_Rn114)  
 Tree with numbered reference. Canopy spread and coloured BS5837:2012 tree quality category as shown below.  
 # = Tree details estimate (inaccessible tree)  
 \* = Tree in off site location  
 G1 Vegetation group with numbered reference. Canopy extents and coloured BS5837:2012 tree quality category as shown below.  
 H1 Hedge with numbered reference. Canopy extents and coloured BS5837:2012 tree quality category as shown below.  
 W1 Woodland with numbered reference. Canopy extents and coloured BS5837:2012 tree quality category as shown below.  
**BS 5837:2012 Tree Quality Categories - Table 1**  
 Category A - High quality  
 Category B - Moderate quality  
 Category C - Low quality  
 Category U - Unsuitable for retention  
 T1 Tree or vegetation to be removed with numbered reference. Canopy spread and BS5837:2012 tree quality category.  
 Root protection area (RPA)  
 Calculated in accordance with Section 4.6 - BS5837:2012  
 Precautionary Root protection area (RPA) previously added to un-surveyed trees. Shown for reference.  
 Tree protected by Conwy Council or Denbighshire Tree Preservation Order (TPO). Bracketed number reference relates to the TPO Schedule.  
 Veteran tree buffer (15 x stem Ø) (as per standing advice produced by Natural Resource Wales)  
 Designated Ancient Woodland and buffer (15m offset, as per Natural Resource Wales woodland inventory, via open data publication)

**Arboricultural BRAG Assessment**  
 Based on quantitative and professional assessment. The ranking is defined as:  
 Black: Significant arboreal asset within development;  
 Red: High potential to constrain development;  
 Amber: Moderate potential to constrain development; and  
 Green: Low potential to constrain development

**Construction Compound or Access Area**  
 Arboricultural constraint based on providing a construction exclusion zone (CEZ):  
 Black: At all times, compound should avoid entering this area;  
 Red: In nearly all circumstances, compound should avoid entering this area;  
 Amber: In most circumstances, compound should avoid entering this area;  
 Green: Little or no arboricultural constraint which would affect compound location

**Cable Crossing Technique with numbered reference**  
 Trenchless  
 Trenching / Trenchless  
 Trenched  
 Indicative temporary protective fencing in accordance with Section 6.2 - BS5837:2012 See example, also shown within supporting report.  
 Indicative temporary visual warning barrier. See example detail, also shown within supporting report.

**NOTES:**  
 • Refer to RPS Tree Survey & Arboricultural Impact Assessment Report for further details.  
 • Survey based on a visual inspection from the ground and is not intended as a full arboricultural inspection.  
 • Plan produced in accordance with recommendations set out in BS 5837:2012 - 'Trees in Relation to design, demolition and construction'.  
 • Due to the legal protection afforded to breeding birds vegetation removal should not take place during the bird nesting period, generally, although not restricted to, March - August inclusive.  
 • Survey based upon aerial photography, therefore tree locations should be deemed as approximate, and not digitally accurate.  
 • Pedestrian/ vehicular emergency access routes to be maintained at all times.  
 • All protective fencing to be completed and approved by LPA / CA prior to commencement of site works.  
 • All works to conform with requirements of BS 5837:2012 - Tree Works  
 • BS 5837:2012 - Trees in relation to design, demolition and construction



Rev	Description	By	CB	Date



Drawing Number: 7130

Project Name: MONA OFFSHORE WIND PROJECT

Drawing Title: TREE AND HEDGEROW PROTECTION PLAN

Scale: Scale@A0: 1:500

Geodetic Information: Datum: ETRS 1989 Projection: British National Grid

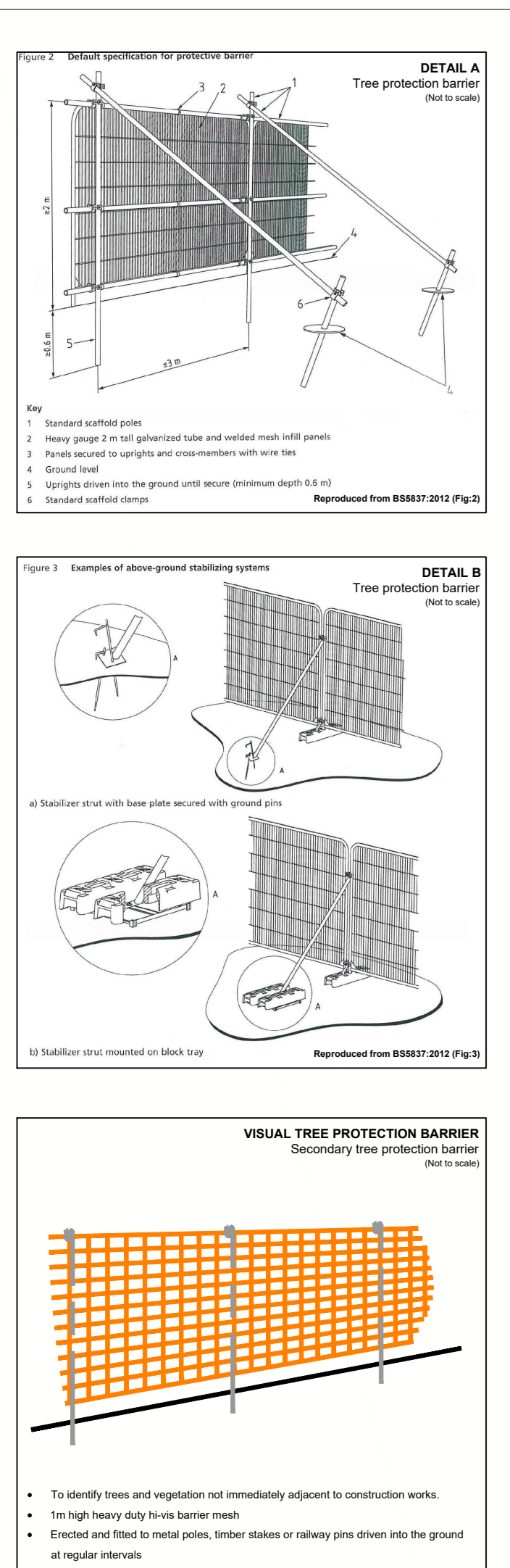
Data Sources: Client

Service Layer Credits: Esri, HERE, Garmin, Intermap, increment P Corp., GEBCO, USGS, FAO, NPS, NRCAN, GeoBase, IGN, Kadaster NL, Ordnance Survey, Esri Japan, METI, Esri China (Hong Kong), (c) OpenStreetMap contributors, and the GIS User Community

VER	DATE	DETAILS	BY	CHECK
01	Jan/24	Comment	RC	DC
06	Jan/25	Information	RC	DC

\\na-bdc01\projects\3900\Series\JL3999 - Morgan and Mona Offshore\Arboriculture\Tech\ACAD\Current\JL3999\_800P\_TPO\_Cable\_Route.dwg  
 \na-bdc01\projects\3900\Series\JL3999 - Morgan and Mona Offshore\Arboriculture\Tech\ACAD\Current\JL3999\_800P\_TPO\_Cable\_Route.dwg





### LEGEND

Construction Development Area  
(MO\_PRL\_BP\_0162\_DCO\_Rn114)

Tree with numbered reference:  
Canopy spread and coloured BS5837:2012 tree quality category as shown below.  
# = Tree details estimate (inaccessible tree)  
• = Tree in off-site location

Vegetation group with numbered reference:  
Canopy extents and coloured BS5837:2012 tree quality category as shown below.

Hedge with numbered reference:  
Canopy extents and coloured BS5837:2012 tree quality category as shown below.

Woodland with numbered reference:  
Canopy extents and coloured BS5837:2012 tree quality category as shown below.

BS 5837:2012 Tree Quality Categories - Table 1

- Category A - High quality
- Category B - Moderate quality
- Category C - Low quality
- Category U - Unsuitable for retention

Tree or vegetation to be removed with numbered reference. Canopy spread and BS5837:2012 tree quality category.

Root protection area (RPA)  
Calculated in accordance with Section 4.6 - BS5837:2012

Precautionary Root protection area (RPA) previously added to un-surveyed trees. Shown for reference.

Tree protected by Conwy Council or Denbighshire Tree Preservation Order (TPO). Bracketed number reference relates to the TPO Schedule.

Veteran tree buffer (15 x stem Ø) (as per standing advice produced by Natural Resource Wales)

Designated Ancient Woodland and buffer (15m offset, as per Natural Resource Wales woodland inventory, via open data publication)

**Arboricultural BRAG Assessment**  
Based on quantitative and professional assessment. The ranking is defined as:

- Black: Significant arboreal asset within development;
- Red: High potential to constrain development;
- Amber: Moderate potential to constrain development; and
- Green: Low potential to constrain development

**Construction Compound or Access Area**  
Arboricultural constraint based on providing a construction exclusion zone (CEZ).

- Black: At all times, compound should avoid entering this area;
- Red: In nearly all circumstances, compound should avoid entering this area;
- Amber: In most circumstances, compound should avoid entering this area;
- Green: Little or no arboricultural constraint which would affect compound location.

**Cable Crossing Technique with numbered reference**

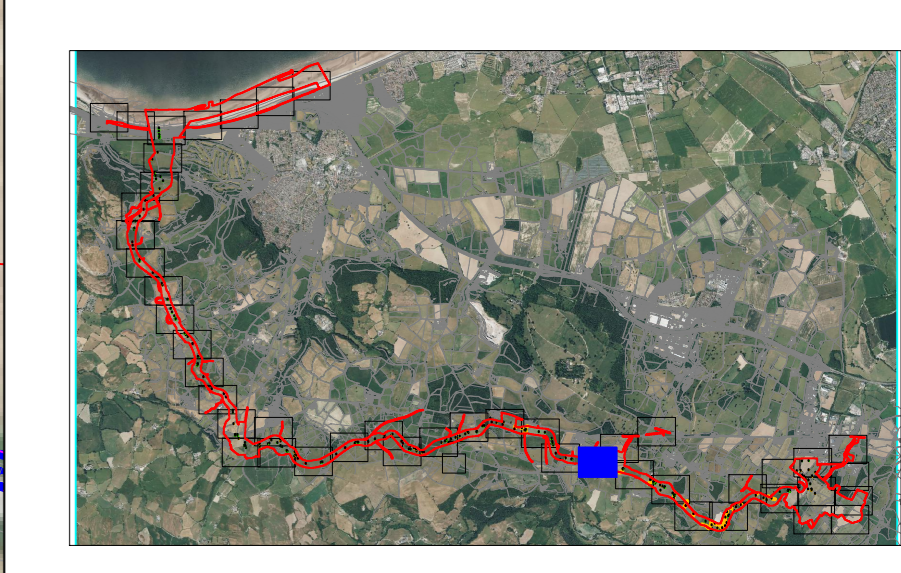
- Trenchless
- Trenching / Trenchless
- Trenched

Indicative temporary protective fencing in accordance with Section 6.2 - BS5837:2012. See example, also shown within supporting report.

Indicative temporary visual warning barrier. See example detail, also shown within supporting report.

**NOTES:**

- Refer to RPS Tree Survey & Arboricultural Impact Assessment Report for further details.
- Survey based on a visual inspection from the ground and is not intended as a full arboricultural inspection.
- Plan produced in accordance with recommendations set out in BS 5837:2012 - 'Trees in Relation to design, demolition and construction'.
- Due to the legal protection afforded to breeding birds vegetation removal should not take place during the bird nesting period, generally, although not restricted to, March - August inclusive.
- Survey based upon aerial photography, therefore tree locations should be deemed as approximate, and not digitally accurate.
- Pedestrian/vehicular emergency access routes to be maintained at all times.
- All protective fencing to be completed and approved by LPA / CA prior to commencement of any site works.
- All works to conform with requirements of BS 5837:2012 - 'Tree Works'.
- BS 5837:2012 - 'Trees in relation to design, demolition and construction'.



Rev	Description	By	CB	Date



Drawing Number:  
**7131**

VER	DATE	DETAILS	BY	CHECK
01	Jan/24	Comment	RC	DC
06	Jan/25	Information	RC	DC

**Project Name:** MONA OFFSHORE WIND PROJECT  
**Drawing Title:** TREE AND HEDGEROW PROTECTION PLAN

**Scale:** Scale@A0: 1:500  
0 50m

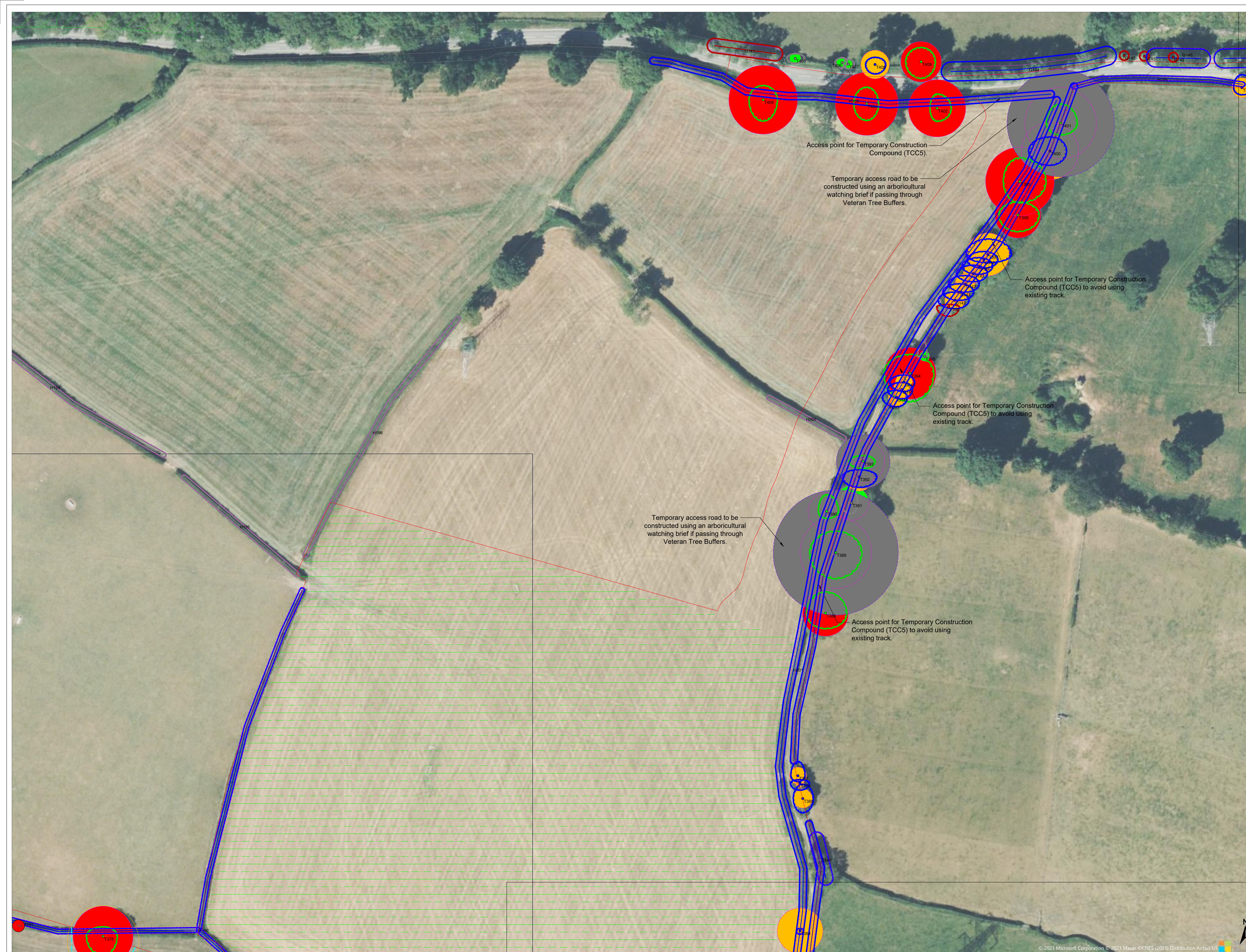
**Geodetic Information:** Datum: ETRS 1989  
Projection: British National Grid

**Data Sources:** Client

**Service Layer Credits:** Esri, HERE, Garmin, Intermap, increment P Corp., GEBCO, USGS, FAO, NPS, NRCAN, GeoBase, IGN, Kadaster NL, Ordnance Survey, Esri Japan, METI, Esri China (Hong Kong), (c) OpenStreetMap contributors, and the GIS User Community

\\nas01\projects\3900\Series\JL3999 - Morgan and Mona Offshore\Arboriculture\Tech\ACAD\Current\JL3999\_800P\_TFP\_Cable\_Route.dwg  
\\nas01\projects\3900\Series\JL3999 - Morgan and Mona Offshore\Arboriculture\Tech\ACAD\Current\JL3999\_800P\_TFP\_Cable\_Route.dwg





### LEGEND

Crustace Development Area  
(MO\_PRL\_BP\_0102\_DCO\_Ru114)

- Tree with numbered reference. Canopy spread and coloured BS5837:2012 tree quality category as shown below.
  - # = Tree details estimate (inaccessible tree)
  - = Tree in off site location
- Vegetation group with numbered reference. Canopy extents and coloured BS5837:2012 tree quality category as shown below.
- Hedge with numbered reference. Canopy extents and coloured BS5837:2012 tree quality category as shown below.
- Woodland with numbered reference. Canopy extents and coloured BS5837:2012 tree quality category as shown below.

BS 5837:2012 Tree Quality Categories - Table 1

- Category A - High quality
- Category B - Moderate quality
- Category C - Low quality
- Category U - Unsuitable for retention

- Tree or vegetation to be removed with numbered reference. Canopy spread and BS5837:2012 tree quality category.
- Root protection area (RPA)
- Calculated in accordance with Section 4.6 - BS5837:2012
- Precautionary Root protection area (PRPA) previously added to un-surveyed trees. Shown for reference.
- Tree protected by Conwy Council or Denbighshire Tree Preservation Order (TPO). Bracketted number reference relates to the TPO Schedule.
- Veteran tree buffer (15 x stem D) (as per standing advice produced by Natural Resource Wales)
- Designated Ancient Woodland and buffer (15m offset, as per Natural Resource Wales woodland inventory, via open data publication)

Arboricultural BRAG Assessment  
Based on quantitative and professional assessment. The ranking is defined as:

- Black: Significant arboreal asset within development;
- Red: High potential to constrain development;
- Amber: Moderate potential to constrain development; and
- Green: Low potential to constrain development

Construction Compound or Access Area  
Arboricultural constraint based on providing a construction exclusion zone (CEZ):

- Black: At all times, compound should avoid entering this area;
- Red: In nearly all circumstances, compound should avoid entering this area;
- Amber: In most circumstances, compound should avoid entering this area;
- Green: Little or no arboricultural constraint which would affect compound location.

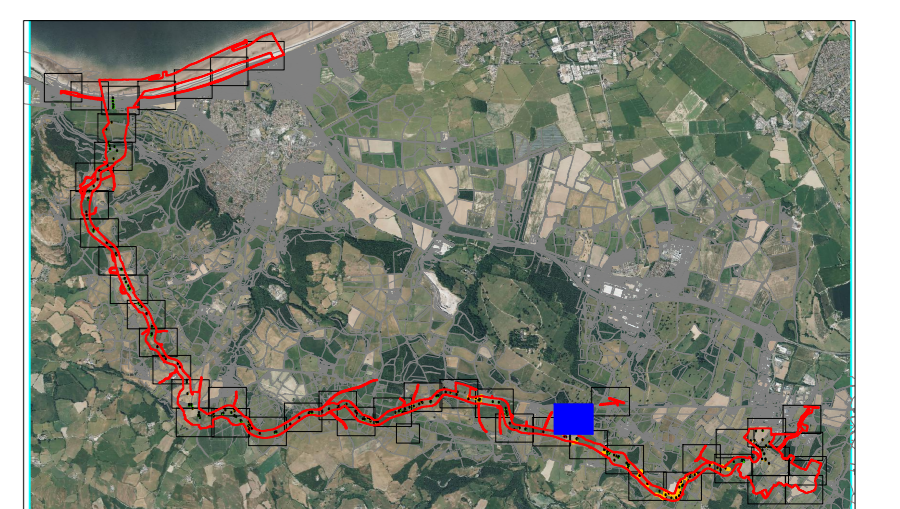
Cable Crossing Technique with numbered reference

- Trenchless
- Trenching / Trenchless
- Trenched

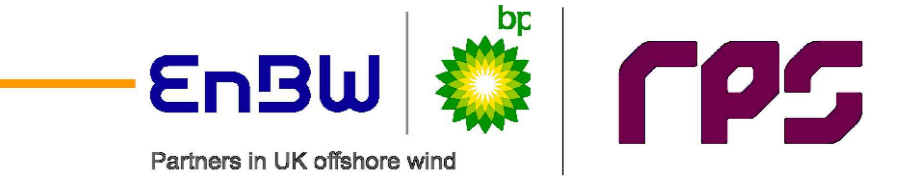
- Indicative temporary protective fencing in accordance with Section 6.2 - BS5837:2012 See example, also shown within supporting report.
- Indicative temporary visual warning barrier. See example detail, also shown within supporting report.

NOTES:

- Refer to RPS Tree Survey & Arboricultural Impact Assessment Report for further details.
- Survey based on a visual inspection from the ground and is not intended as a full arboricultural inspection.
- Plan produced in accordance with recommendations set out in BS 5837:2012 - 'Trees in Relation to design, demolition and construction'.
- Due to the legal protection afforded to breeding birds vegetation removal should not take place during the bird nesting period, generally, although not restricted to March - August inclusive.
- Survey based upon aerial photography, therefore tree locations should be deemed as approximate, and not digitally accurate.
- Pedestrian/vehicular emergency access routes to be maintained at all times.
- All protective fencing to be completed and approved by LPA / CA prior to commencement of site works.
- All works to conform with requirements of BS 5837:2012 - 'Tree Works'.
- BS 5837:2012 - 'Trees in relation to design, demolition and construction'



Rev	Description	By	CB	Date



Drawing Number:  
**7132**

**Project Name:**  
MONA OFFSHORE WIND PROJECT

**Drawing Title:**  
TREE AND HEDGEROW PROTECTION PLAN

**Scale**  
Scale@A0: 1:500

**Geodetic Information:**  
Datum: ETRS 1989  
Projection: British National Grid

**Data Sources:** Client

**Service Layer Credits:** Esri, HERE, Garmin, Intermap, increment P Corp., GEBCO, USGS, FAO, NPS, NRCAN, GeoBase, IGN, Kadaster NL, Ordnance Survey, Esri Japan, METI, Esri China (Hong Kong), (c) OpenStreetMap contributors, and the GIS User Community

VER	DATE	DETAILS	BY	CHECK
01	Jan/24	Comment	RC	DC
06	Jan/25	Information	RC	DC

\\s01-rs-01\projects\3900\Series\JL3999 - Morgan and Mona Offshore\Arboriculture\Tech\ACAD\Current\JL3999\_800P\_TFP\_CableRoute.dwg  
\\s01-rs-01\projects\3900\Series\JL3999 - Morgan and Mona Offshore\Arboriculture\Tech\ACAD\Current\JL3999\_800P\_TFP\_CableRoute.dwg





### LEGEND

- Crustace Development Area (MO\_PRL\_BP\_0102\_DCO\_Ru114)
- Tree with numbered reference. Canopy spread and coloured BS5837:2012 tree quality category as shown below. # = Tree details estimate (inaccessible tree) \* = Tree in off site location
- Vegetation group with numbered reference. Canopy extents and coloured BS5837:2012 tree quality category as shown below.
- Hedge with numbered reference. Canopy extents and coloured BS5837:2012 tree quality category as shown below.
- Woodland with numbered reference. Canopy extents and coloured BS5837:2012 tree quality category as shown below.

**BS 5837:2012 Tree Quality Categories - Table 1**

- Category A - High quality
- Category B - Moderate quality
- Category C - Low quality
- Category U - Unsuitable for retention

- Tree or vegetation to be removed with numbered reference. Canopy spread and BS5837:2012 tree quality category.
- Root protection area (RPA). Calculated in accordance with Section 4.6 - BS5837:2012.
- Precautionary Root protection area (RPA) previously added to un-surveyed trees. Shown for reference.
- Tree protected by Conwy Council or Denbighshire Tree Preservation Order (TPO). Bracketed number reference relates to the TPO Schedule.
- Veteran tree buffer (15 x stem D) (as per standing advice produced by Natural Resource Wales)
- Designated Ancient Woodland and buffer (15m offset, as per Natural Resource Wales woodland inventory, via open data publication)

**Arboricultural BRAG Assessment**  
Based on quantitative and professional assessment. The ranking is defined as:

- Black: Significant arboreal asset within development;
- Red: High potential to constrain development;
- Amber: Moderate potential to constrain development; and
- Green: Low potential to constrain development

**Construction Compound or Access Area**  
Arboricultural constraint based on providing a construction exclusion zone (CEZ):

- Black: At all times, compound should avoid entering this area;
- Red: In nearly all circumstances, compound should avoid entering this area;
- Amber: In most circumstances, compound should avoid entering this area;
- Green: Little or no arboricultural constraint which would affect compound location.

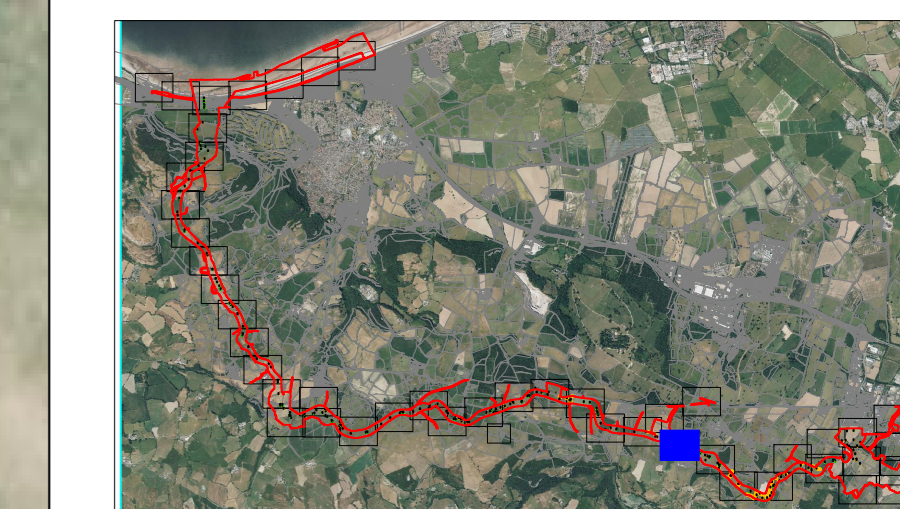
**Cable Crossing Technique with numbered reference**

- Trenchless
- Trenching / Trenchless
- Trenched

- Indicative temporary protective fencing in accordance with Section 8.2 - BS5837:2012. See example, also shown within supporting report.
- Indicative temporary visual warning barrier. See example detail, also shown within supporting report.

**NOTES:**

- Refer to RPS Tree Survey & Arboricultural Impact Assessment Report for further details.
- Survey based on a visual inspection from the ground and is not intended as a full arboricultural inspection.
- Plan produced in accordance with recommendations set out in BS 5837:2012 - 'Trees in Relation to design, demolition and construction'.
- Due to the legal protection afforded to breeding birds vegetation removal should not take place during the bird nesting period, generally, although not restricted to March - August inclusive.
- Survey based upon aerial photography, therefore tree locations should be deemed as approximate, and not digitally accurate.
- Pedestrian/vehicular emergency access routes to be maintained at all times.
- All protective fencing to be completed and approved by LPA / CA prior to commencement of any site works.
- All works to conform with requirements of: BS 5837:2012 - Tree Works
- BS 5837:2012 - Trees in relation to design, demolition and construction



Rev	Description	By	CB	Date



Drawing Number:  
**7133**

**Project Name:**  
MONA OFFSHORE WIND PROJECT

**Drawing Title:**  
TREE AND HEDGEROW PROTECTION PLAN

**Scale**  
Scale@A0: 1:500

**Geodetic Information:**  
Datum: ETRS 1989  
Projection: British National Grid

**Data Sources:** Client

**Service Layer Credits:** Esri, HERE, Garmin, Intermap, increment P Corp., GEBCO, USGS, FAO, NPS, NRCAN, GeoBase, IGN, Kadaster NL, Ordnance Survey, Esri Japan, METI, Esri China (Hong Kong), (c) OpenStreetMap contributors, and the GIS User Community

VER	DATE	DETAILS	BY	CHECK
01	Jan/24	Comment	RC	DC
06	Jan/25	Information	RC	DC

\\na-bdc01\projects\3900\Series\JL3999 - Morgan and Mona Offshore\Arboriculture\Tech\ACAD\Current\JL3999\_800P\_TFP\_Cable.Route.dwg  
\\na-bdc01\projects\3900\Series\JL3999 - Morgan and Mona Offshore\Arboriculture\Tech\ACAD\Current\JL3999\_800P\_TFP\_Cable.Route.dwg





### LEGEND

Crustace Development Area  
(MO\_PRL\_BP\_0102\_DCO\_Rn114)

T1 Tree with numbered reference.  
Canopy spread and coloured BS5837:2012 tree quality category as shown below.  
# = Tree details estimate (inaccessible tree)  
• = Tree in off site location

G1 Vegetation group with numbered reference.  
Canopy extents and coloured BS5837:2012 tree quality category as shown below.

H1 Hedge with numbered reference.  
Canopy extents and coloured BS5837:2012 tree quality category as shown below.

W1 Woodland with numbered reference.  
Canopy extents and coloured BS5837:2012 tree quality category as shown below.

BS 5837:2012 Tree Quality Categories - Table 1

- Category A - High quality
- Category B - Moderate quality
- Category C - Low quality
- Category U - Unsuitable for retention

T1 Tree or vegetation to be removed with numbered reference, Canopy spread and BS5837:2012 tree quality category.

Root protection area (RPA)  
Calculated in accordance with Section 4.6 - BS5837:2012

Precautionary Root protection area (RPA)  
Previously added to un-surveyed trees, Shown for reference.

Tree protected by Conwy Council or Denbighshire Tree Preservation Order (TPO). Bracketed number reference relates to the TPO Schedule.

Veteran tree buffer (15 x stem Ø)  
(as per standing advice produced by Natural Resource Wales)

Designated Ancient Woodland and buffer (15m offset, as per Natural Resource Wales woodland inventory, via open data publication)

Arboricultural BRAG Assessment  
Based on quantitative and professional assessment. The ranking is defined as:

- Black: Significant arboreal asset within development;
- Red: High potential to constrain development;
- Amber: Moderate potential to constrain development; and
- Green: Low potential to constrain development

Construction Compound or Access Area  
Arboricultural constraint based on providing a construction exclusion zone (CEZ).

- Black: At all times, compound should avoid entering this area;
- Red: In nearly all circumstances, compound should avoid entering this area;
- Amber: In most circumstances, compound should avoid entering this area;
- Green: Little or no arboricultural constraint which would affect compound location.

Cable Crossing Technique with numbered reference

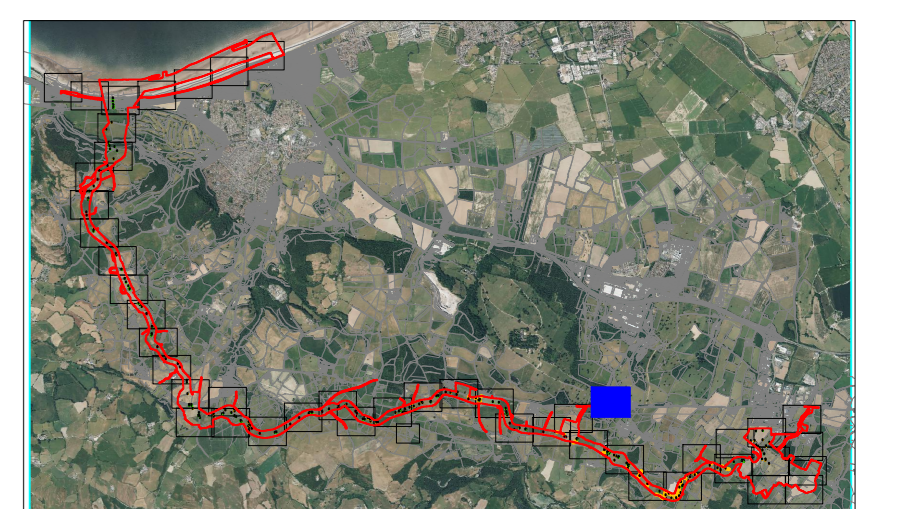
- Trenchless
- Trenching / Trenchless
- Trenched

Indicative temporary protective fencing in accordance with Section 8.2 - BS5837:2012  
See example, also shown within supporting report.

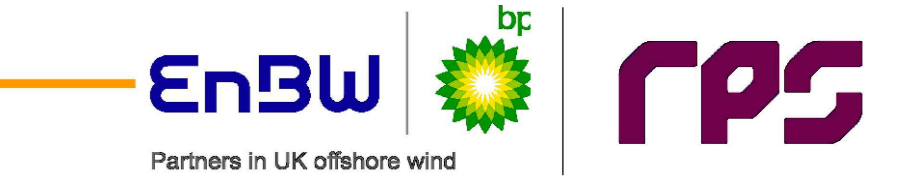
Indicative temporary visual warning barrier.  
See example detail, also shown within supporting report.

NOTES:

- Refer to RPS Tree Survey & Arboricultural Impact Assessment Report for further details.
- Survey based on a visual inspection from the ground and is not intended as a full arboricultural inspection.
- Plan produced in accordance with recommendations set out in BS 5837:2012 - 'Trees in Relation to design, demolition and construction'.
- Due to the legal protection afforded to breeding birds vegetation removal should not take place during the bird nesting period, generally, although not restricted to March - August inclusive.
- Survey based upon aerial photography, therefore tree locations should be deemed as approximate, and not digitally accurate.
- Pedestrian/vehicular emergency access routes to be maintained at all times.
- All protective fencing to be completed and approved by LPA / CA prior to commencement of site works.
- All works to conform with requirements of:  
BS 5837:2012 - Tree Works  
BS 5837:2012 - Trees in relation to design, demolition and construction



Rev	Description	By	CB	Date



Drawing Number:  
**7134**

Project Name:  
**MONA OFFSHORE WIND PROJECT**

Drawing Title:  
**TREE AND HEDGEROW PROTECTION PLAN**

Scale  
Scale@A0: 1:500  
0 50m

Geodetic Information:  
Datum: ETRS 1989  
Projection: British National Grid

Data Sources: Client

Service Layer Credits: Esri, HERE, Garmin, Intermap, increment P Corp., GEBCO, USGS, FAO, NPS, NRCAN, GeoBase, IGN, Kadaster NL, Ordnance Survey, Esri Japan, METI, Esri China (Hong Kong), (c) OpenStreetMap contributors, and the GIS User Community

VER	DATE	DETAILS	BY	CHECK
01	Jan/24	Comment	RC	DC
06	Jan/25	Information	RC	DC

\\s01-rs-01\projects\3000\Series\JL3999 - Morgan and Mona Offshore\Technical\ACAD\Current\JL3999\_800F\_TFP\_Cable\_Route.dwg  
\\s01-rs-01\projects\3000\Series\JL3999 - Morgan and Mona Offshore\Technical\ACAD\Current\JL3999\_800F\_TFP\_Cable\_Route.dwg





### LEGEND

Creation Development Area (MO\_PRL\_BP\_0102\_DCO\_Rn114)

Tree with numbered reference. Canopy spread and coloured BS5837:2012 tree quality category as shown below.  
 # = Tree details estimate (inaccessible tree)  
 \* = Tree in off site location

G1 Vegetation group with numbered reference. Canopy extents and coloured BS5837:2012 tree quality category as shown below.

H1 Hedge with numbered reference. Canopy extents and coloured BS5837:2012 tree quality category as shown below.

W1 Woodland with numbered reference. Canopy extents and coloured BS5837:2012 tree quality category as shown below.

**BS 5837:2012 Tree Quality Categories - Table 1**

- Category A - High quality
- Category B - Moderate quality
- Category C - Low quality
- Category U - Unsuitable for retention

T1 Tree or vegetation to be removed with numbered reference. Canopy spread and BS5837:2012 tree quality category.

Root protection area (RPA) Calculated in accordance with Section 4.6 - BS5837:2012

Precautionary Root protection area (RPA) previously added to un-surveyed trees. Shown for reference.

Tree protected by Conwy Council or Denbighshire Tree Preservation Order (TPO). Bracketed number reference relates to the TPO Schedule.

Veteran tree buffer (15 x stem D) (as per standing advice produced by Natural Resource Wales)

Designated Ancient Woodland and buffer (15m offset, as per Natural Resource Wales woodland inventory, via open data publication)

**Arboricultural BRAG Assessment**  
 Based on quantitative and professional assessment. The ranking is defined as:

- Black: Significant arboreal asset within development;
- Red: High potential to constrain development;
- Amber: Moderate potential to constrain development; and
- Green: Low potential to constrain development

**Construction Compound or Access Area**  
 Arboricultural constraint based on providing a construction exclusion zone (CEZ):

- Black: At all times, compound should avoid entering this area;
- Red: In nearly all circumstances, compound should avoid entering this area;
- Amber: In most circumstances, compound should avoid entering this area;
- Green: Little or no arboricultural constraint which would affect compound location.

**Cable Crossing Technique with numbered reference**

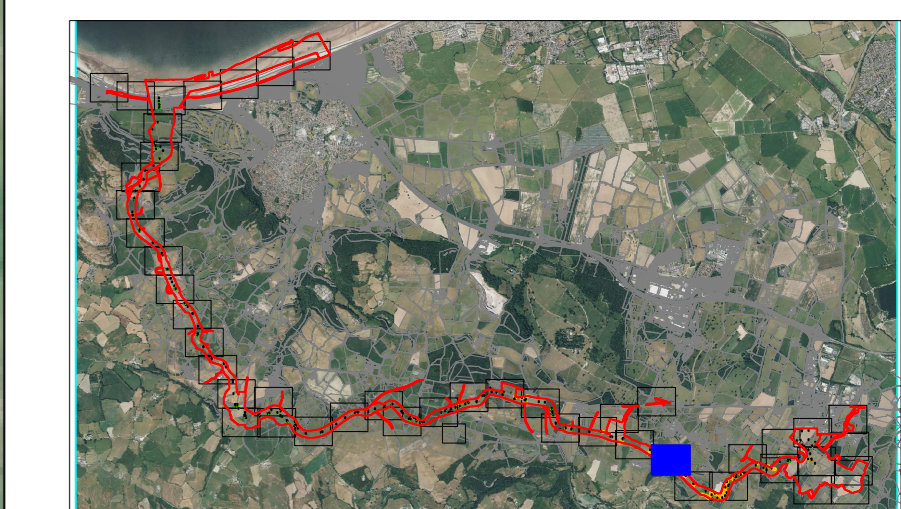
- Trenchless
- Trenching / Trenchless
- Trenched

Indicative temporary protective fencing in accordance with Section 8.2 - BS5837:2012 See example, also shown within supporting report.

Indicative temporary visual warning barrier. See example detail, also shown within supporting report.

**NOTES:**

- Refer to RPS Tree Survey & Arboricultural Impact Assessment Report for further details.
- Survey based on a visual inspection from the ground and is not intended as a full arboricultural inspection.
- Plan produced in accordance with recommendations set out in BS 5837:2012 - 'Trees in Relation to design, demolition and construction'.
- Due to the legal protection afforded to breeding birds vegetation removal should not take place during the bird nesting period, generally, although not restricted to, March - August inclusive.
- Survey based upon aerial photography, therefore tree locations should be deemed as approximate, and not digitally accurate.
- Precedent: vehicular emergency access routes to be maintained at all times.
- All protective fencing to be completed and approved by LPA / CA prior to commencement of site works.
- All works to conform with requirements of BS 5837:2012 - 'Tree Works'.
- BS 5837:2012 - 'Trees in relation to design, demolition and construction'



Rev	Description	By	CB	Date



Drawing Number: 7135

VER	DATE	DETAILS	BY	CHECK
01	Jan/24	Comment	RC	DC
06	Jan/25	Information	RC	DC

**Project Name:**  
MONA OFFSHORE WIND PROJECT

**Drawing Title:**  
TREE AND HEDGEROW PROTECTION PLAN

**Scale**  
Scale@A0: 1:500

**Geodetic Information:**  
Datum: ETRS 1989  
Projection: British National Grid

**Data Sources:** Client

**Service Layer Credits:** Esri, HERE, Garmin, Intermap, increment P Corp., GEBCO, USGS, FAO, NPS, NRCAN, GeoBase, IGN, Kadaster NL, Ordnance Survey, Esri Japan, METI, Esri China (Hong Kong), (c) OpenStreetMap contributors, and the GIS User Community

\\nas01-01\projects\3000\Series\JL3999 - Morgan and Mona Offshore\Arboriculture\Tech\ACAD\Current\JL3999\_800P\_TFP\_Cable\_Route.dwg  
 \\\nas01-01\projects\3000\Series\JL3999 - Morgan and Mona Offshore\Arboriculture\Tech\ACAD\Current\JL3999\_800P\_TFP\_Cable\_Route.dwg





### LEGEND

**Crustace Development Area**  
(MO\_PHL\_BP\_0102\_DCO\_Ru114)

- T1 Tree with numbered reference. Canopy spread and coloured BSS5837:2012 tree quality category as shown below.
  - # = Tree details estimate (inaccessible tree)
  - = Tree in off site location
- G1 Vegetation group with numbered reference. Canopy extents and coloured BSS5837:2012 tree quality category as shown below.
- H1 Hedge with numbered reference. Canopy extents and coloured BSS5837:2012 tree quality category as shown below.
- W1 Woodland with numbered reference. Canopy extents and coloured BSS5837:2012 tree quality category as shown below.

**BS 5837:2012 Tree Quality Categories - Table 1**

- Category A - High quality
- Category B - Moderate quality
- Category C - Low quality
- Category U - Unsuitable for retention

**T1** Tree or vegetation to be removed with numbered reference. Canopy spread and BSS5837:2012 tree quality category.

- Root protection area (RPA) Calculated in accordance with Section 4.6 - BSS5837:2012
- Precautionary Root protection area (RPA) previously added to un-surveyed trees. Shown for reference.
- Tree protected by Conwy Council or Denbighshire Tree Preservation Order (TPO). Bracketted number reference relates to the TPO Schedule.
- Veteran tree buffer (15 x stem ID) (as per standing advice produced by Natural Resource Wales)
- Designated Ancient Woodland and buffer (15m offset, as per Natural Resource Wales woodland inventory, via open data publication)

**Arboricultural BRAG Assessment**  
Based on quantitative and professional assessment. The ranking is defined as:

- Black: Significant arboreal asset within development;
- Red: High potential to constrain development;
- Amber: Moderate potential to constrain development; and
- Green: Low potential to constrain development

**Construction Compound or Access Area**  
Arboricultural constraint based on providing a construction exclusion zone (CEZ):

- Black: At all times, compound should avoid entering this area;
- Red: In nearly all circumstances, compound should avoid entering this area;
- Amber: In most circumstances, compound should avoid entering this area;
- Green: Little or no arboricultural constraint which would affect compound location.

**Cable Crossing Technique with numbered reference**

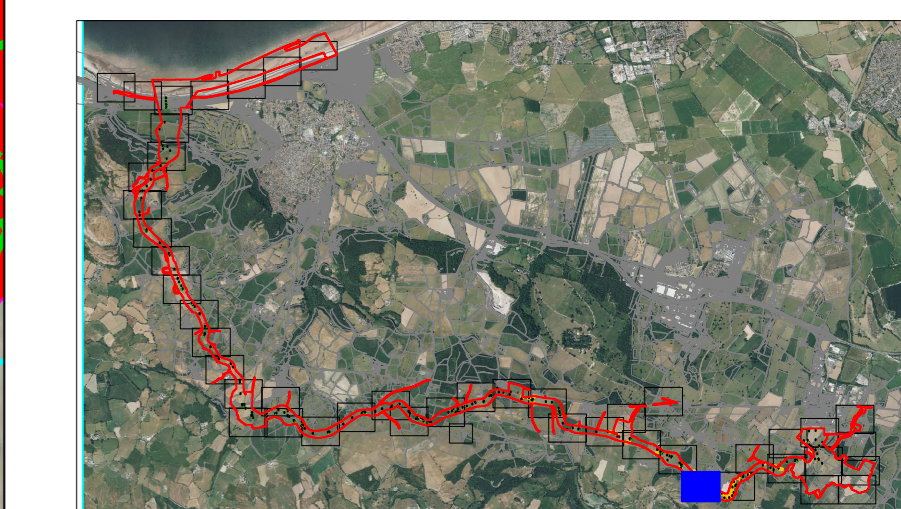
- Trenchless
- Trenching / Trenchless
- Trenched

Indicative temporary protective fencing in accordance with Section 6.2 - BSS5837:2012 See example, also shown within supporting report.

Indicative temporary visual warning barrier. See example detail, also shown within supporting report.

**NOTES:**

- Refer to RPS Tree Survey & Arboricultural Impact Assessment Report for further details.
- Survey based on a visual inspection from the ground and is not intended as a full arboricultural inspection.
- Plan produced in accordance with recommendations set out in BS 5837:2012 - 'Trees in Relation to design, demolition and construction'.
- Due to the legal protection afforded to breeding birds vegetation removal should not take place during the bird nesting period, generally, although not restricted to, March - August inclusive.
- Survey based upon aerial photography, therefore tree locations should be deemed as approximate, and not digitally accurate.
- Pedestrian/vehicular emergency access routes to be maintained at all times.
- All protective fencing to be completed and approved by LPA / CA prior to commencement of any site works.
- All works to conform with requirements of BS 5838:2015 - Tree Works
- BS 5837:2012 - Trees in relation to design, demolition and construction



Rev	Description	By	CB	Date



Drawing Number:  
**7136**

**Project Name:**  
MONA OFFSHORE WIND PROJECT

**Drawing Title:**  
TREE AND HEDGEROW PROTECTION PLAN

**Scale**  
Scale@A0: 1:500

**Geodetic Information:**  
Datum: ETRS 1989  
Projection: British National Grid

**Data Sources:** Client

**Service Layer Credits:** Esri, HERE, Garmin, Intermap, increment P Corp., GEBCO, USGS, FAO, NPS, NRCAN, GeoBase, IGN, Kadaster NL, Ordnance Survey, Esri Japan, METI, Esri China (Hong Kong), (c) OpenStreetMap contributors, and the GIS User Community

VER	DATE	DETAILS	BY	CHECK
01	Jan/24	Comment	RC	DC
06	Jan/25	Information	RC	DC

\\na-bdc01\projects\3900\Series\JL3999 - Morgan and Mona Offshore\Arboriculture\Tech\ACAD\Current\JL3999\_800P\_TFP\_Cable.Route.dwg  
\\na-bdc01\projects\3900\Series\JL3999 - Morgan and Mona Offshore\Arboriculture\Tech\ACAD\Current\JL3999\_800P\_TFP\_Cable.Route.dwg





### LEGEND

Crustace Development Area  
(MO\_PRL\_BP\_0162\_DCO\_Ru114)

T1 Tree with numbered reference.  
Canopy spread and coloured BS5837:2012 tree quality category as shown below.  
# = Tree details estimate (inaccessible tree)  
• = Tree in site location

G1 Vegetation group with numbered reference.  
Canopy extents and coloured BS5837:2012 tree quality category as shown below.

H1 Hedgerow with numbered reference.  
Canopy extents and coloured BS5837:2012 tree quality category as shown below.

W1 Woodland with numbered reference.  
Canopy extents and coloured BS5837:2012 tree quality category as shown below.

BS 5837:2012 Tree Quality Categories - Table 1

- Category A - High quality
- Category B - Moderate quality
- Category C - Low quality
- Category U - Unsuitable for retention

T1 Tree or vegetation to be removed with numbered reference. Canopy spread and BS5837:2012 tree quality category.

Root protection area (RPA)  
Calculated in accordance with Section 4.6 - BS5837:2012

Precautionary Root protection area (RPA) previously added to un-surveyed trees. Shown for reference.

Tree protected by Conwy Council or Denbighshire Tree Preservation Order (TPO). Bracketed number reference relates to the TPO Schedule.

Veteran tree buffer (15 x stem D) (as per standing advice produced by Natural Resource Wales)

Designated Ancient Woodland and buffer (15m offset, as per Natural Resource Wales woodland inventory, via open data publication)

Arboricultural BRAG Assessment  
Based on quantitative and professional assessment. The ranking is defined as:

- Black: Significant arboreal asset within development;
- Red: High potential to constrain development;
- Amber: Moderate potential to constrain development; and
- Green: Low potential to constrain development

Construction Compound or Access Area  
Arboricultural constraint based on providing a construction exclusion zone (CEZ):

- Black: At all times, compound should avoid entering this area;
- Red: In nearly all circumstances, compound should avoid entering this area;
- Amber: In most circumstances, compound should avoid entering this area;
- Green: Little or no arboricultural constraint which would affect compound location.

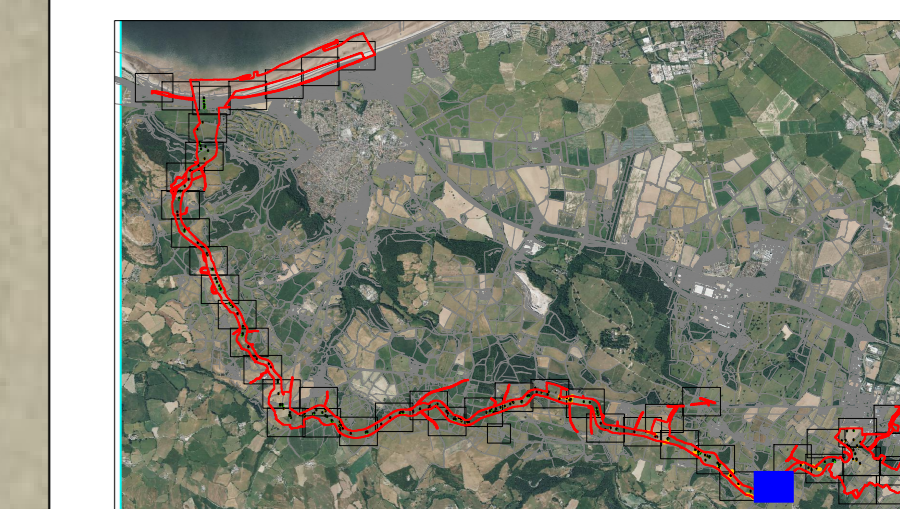
Cable Crossing Technique with numbered reference

- Trenchless
- Trenching / Trenchless
- Trenched

Indicative temporary protective fencing in accordance with Section 8.2 - BS5837:2012 See example, also shown within supporting report.

Indicative temporary visual warning barrier. See example detail, also shown within supporting report.

- NOTES:
- Refer to RPS Tree Survey & Arboricultural Impact Assessment Report for further details.
  - Survey based on a visual inspection from the ground and is not intended as a full arboricultural inspection.
  - Plan produced in accordance with recommendations set out in BS 5837:2012 - 'Trees in Relation to design, demolition and construction'.
  - Due to the legal protection afforded to breeding birds vegetation removal should not take place during the bird nesting period, generally, although not restricted to, March - August inclusive.
  - Survey based upon aerial photography, therefore tree locations should be deemed as approximate, and not digitally accurate.
  - Provisional vehicular emergency access routes to be maintained at all times.
  - All protective fencing to be completed and approved by LPA / CA prior to commencement of any site works.
  - All works to conform with requirements of BS 5837:2012 - 'Tree Works'.
  - BS 5837:2012 - 'Trees in relation to design, demolition and construction'



Rev	Description	By	CB	Date



Drawing Number:  
**7137**

Project Name:  
**MONA OFFSHORE WIND PROJECT**

Drawing Title:  
**TREE AND HEDGEROW PROTECTION PLAN**

Scale  
Scale@A0: 1:500

Geodetic Information:  
Datum: ETRS 1989  
Projection: British National Grid

Data Sources: Client

Service Layer Credits: Esri, HERE, Garmin, Intermap, increment P Corp., GEBCO, USGS, FAO, NPS, NRCAN, GeoBase, IGN, Kadaster NL, Ordnance Survey, Esri Japan, METI, Esri China (Hong Kong), (c) OpenStreetMap contributors, and the GIS User Community

VER	DATE	DETAILS	BY	CHECK
01	Jan/24	Comment	RC	DC
06	Jan/25	Information	RC	DC

\\nas01\c01\projects\3900\Series\JL3999 - Morgan and Mona Offshore\Arboriculture\Tech\ACAD\Current\JL3999\_800F\_TFP\_Cable.Route.dwg  
\\nas01\c01\projects\3900\Series\JL3999 - Morgan and Mona Offshore\Arboriculture\Tech\ACAD\Current\JL3999\_800F\_TFP\_Cable.Route.dwg





### LEGEND

Creation Development Area (MO\_PRL\_BP\_0162\_DCO\_Ru114)  
 Tree with numbered reference. Canopy spread and coloured BS5837:2012 tree quality category as shown below.  
 Tree details estimate (inaccessible tree)  
 Tree in off-site location  
 Vegetation group with numbered reference. Canopy extents and coloured BS5837:2012 tree quality category as shown below.  
 Hedge with numbered reference. Canopy extents and coloured BS5837:2012 tree quality category as shown below.  
 Woodland with numbered reference. Canopy extents and coloured BS5837:2012 tree quality category as shown below.

**BS 5837:2012 Tree Quality Categories - Table 1**  
 Category A - High quality  
 Category B - Moderate quality  
 Category C - Low quality  
 Category U - Unsuitable for retention

Tree or vegetation to be removed with numbered reference. Canopy spread and BS5837:2012 tree quality category.  
 Root protection area (RPA). Calculated in accordance with Section 4.6 - BS5837:2012.  
 Precautionary Root protection area (RPA) previously added to un-surveyed trees. Shown for reference.  
 Tree protected by Conwy Council or Denbighshire Tree Preservation Order (TPO). Bracketed number reference relates to the TPO Schedule.  
 Veteran tree buffer (15 x stem D) (as per standing advice produced by Natural Resource Wales)  
 Designated Ancient Woodland and buffer (15m offset, as per Natural Resource Wales woodland inventory, via open data publication)

**Arboricultural BRAG Assessment**  
 Based on quantitative and professional assessment. The ranking is defined as:

- Black: Significant arboreal asset within development;
- Red: High potential to constrain development;
- Amber: Moderate potential to constrain development; and
- Green: Low potential to constrain development

**Construction Compound or Access Area**  
 Arboricultural constraint based on providing a construction exclusion zone (CEZ):

- Black: At all times, compound should avoid entering this area;
- Red: In nearly all circumstances, compound should avoid entering this area;
- Amber: In most circumstances, compound should avoid entering this area;
- Green: Little or no arboricultural constraint which would affect compound location.

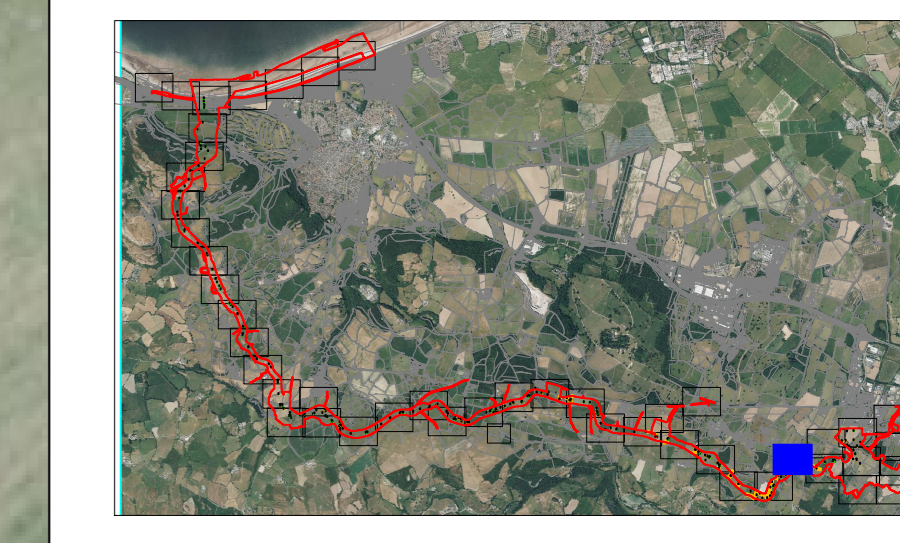
**Cable Crossing Technique with numbered reference**

- Trenchless
- Trenching / Trenchless
- Trenched

Indicative temporary protective fencing in accordance with Section 6.2 - BS5837:2012. See example, also shown within supporting report.  
 Indicative temporary visual warning barrier. See example detail, also shown within supporting report.

**NOTES:**

- Refer to RPS Tree Survey & Arboricultural Impact Assessment Report for further details.
- Survey based on a visual inspection from the ground and is not intended as a full arboricultural inspection.
- Plan produced in accordance with recommendations set out in BS 5837:2012 - 'Trees in Relation to design, demolition and construction'.
- Due to the legal protection afforded to breeding birds vegetation removal should not take place during the bird nesting period, generally, although not restricted to, March - August inclusive.
- Survey based upon aerial photography, therefore tree locations should be deemed as approximate, and not digitally accurate.
- Pedestrian/vehicular emergency access routes to be maintained at all times.
- All protective fencing to be completed and approved by LPA / CA prior to commencement of any site works.
- All works to conform with requirements of BS 5837:2012 - Tree Works.
- BS 5837:2012 - Trees in relation to design, demolition and construction.



Rev	Description	By	CB	Date



Drawing Number:  
**7138**

**Project Name:**  
MONA OFFSHORE WIND PROJECT

**Drawing Title:**  
TREE AND HEDGEROW PROTECTION PLAN

**Scale**  
Scale@A0: 1:500

**Geodetic Information:**  
Datum: ETRS 1989  
Projection: British National Grid

**Data Sources:** Client

**Service Layer Credits:** Esri, HERE, Garmin, Intermap, increment P Corp., GEBCO, USGS, FAO, NPS, NRCAN, GeoBase, IGN, Kadaster NL, Ordnance Survey, Esri Japan, METI, Esri China (Hong Kong), (c) OpenStreetMap contributors, and the GIS User Community

VER	DATE	DETAILS	BY	CHECK
01	Jan/24	Comment	RC	DC
06	Jan/25	Information	RC	DC

\\s01-rs-01\projects\3900\Series\JL3999 - Morgan and Mona Offshore\Arboriculture\Tech\ACAD\Current\JL3999\_800P\_TFP\_Cable\_Route.dwg  
 Visu@rs-01\projects\3900\Series\JL3999 - Morgan and Mona Offshore\Arboriculture\Tech\ACAD\Current\JL3999\_800P\_TFP\_Cable\_Route.dwg